



1995 CATALOGUE

The Fujimi collection of masterpiece scale models is among the most exquisitely detailed in the world. Breadth of selection sets us apart, as does our passion for authenticity. Our is the realism that lets you enjoy maximum satisfaction from a superbly finished model. As perfection, we insist on being at the forefront of molding and materials innovations, we strive to be the leader in modeling techniques. The result...

ONLY LIFE IS AS REAL



1995 NEW



03371 1/24 SUZUKI ESCUDO /VITARA



12511 1/24 MARCH TOMMY KAIRA M-13



06148 1/24 MERCEDES BENZ DTM'94 'PROMARK'



72009 1/72 GEKKO J1N2-S IRVING

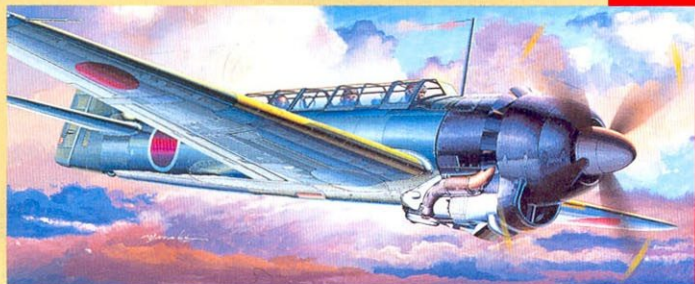


72015 1/72 F/A-18D HORNET U.S.MARINE

MODEL



72019 1/72 SAIUN C6N1 MYRT NIGHT FIGHTER



72023 1/72 SAIUN C6N2 MYRT



72028 HAYABUSA KI-43 OSCAR (A)



43083 1/700 CV HOSHO

06142 1/24 MERCEDES BENZ DTM'94 'D2'

06146 1/24 MERCEDES BENZ DTM'94 'SONAX/TABEC'

72007 1/72 F/A-18C HORNET U.S.NAVY

72008 1/72 SAIUN C6N1 MYRT

72021 1/72 GEKKO J1N3 IRVING TYPE 23

72022 1/72 GEKKO J1N1 RECONNAISSANCE

Contents

AUTOMOBILES

1:12 scale BOLT ON CAR SERIES	3
1:16 scale ENTHUSIAST MODEL SERIES	4
1:24 scale ENTHUSIAST MODEL SERIES	6
1:24 scale HISTORIC RACING CAR SERIES	8
1:24 scale REAL SPORTS CAR SERIES	9
1:24 scale LIGHT WEIGHT SPORTS CAR SERIES	12
1:24 scale ARV&DRV CAR SERIES	13
1:24 scale INCH UP SERIES	15
1:24 scale JUST TUNING CAR SERIES	19
1:24 scale K CAR SERIES	21
1:12 & 1:15 scale BIKE SERIES	22
1:48 scale CORE SERIES	22
1:24 scale TOHGE SERIES	23
1:24 scale TOURING CAR SERIES	25
1:24 scale SUPER CAR GT SERIES	26
1:24 scale GARAGE&TOOLS SERIES	27
1:24 scale TYRE&WHEEL SET SERIES	28

AIR CRAFT

1:72 scale AIR CRAFT SERIES	30
1:48 scale AIR CRAFT SERIES	38
1:72 scale HELICOPTER SERIES	41
1:48 scale HELICOPTER SERIES	43

MILITARY

1:76 scale MILITARY SERIES	44
----------------------------	----

SEA WAY MODEL

1:700 scale SEA WAY MODEL SERIES	46
----------------------------------	----

JAPANESE CASTLE

JAPANESE CASTLE&TEMPLE	48
------------------------	----

TOURING CAR

Stock car racing is taking the world by storm.

As we go to press, stock car racing is taking the world by storm. In spite of being recognized as the ultimate in auto racing, Formula 1 is fading in popularity, not only due to tragedies such as the death of racing great Ayrton Senna, but also because of the clearly defined gap between teams and the political manipulation that has invaded this arena. Quickly supplanting it as the focus of attention for motor sport fans is touring car racing.

It is hardly surprising that the sport draws so much attention when cars fans see all around them—or the ones they themselves are driving—are speeding around racing circuits. The Skyline GT-R is one example, having participated in the All Japan Touring Car Championship Series as a Group A machine. The participation of just one GT-R gave touring car races a major boost in popularity, to the point that as many as 100,000 people gathered to watch a single event.

The very same phenomenon is being repeated all around the world. The Touring Car Championship Series in Germany (DTM) and the UK (BTCC) are particularly prominent, and taking after these two series, similar championship series are being held throughout the world.

Until very recently, touring car racing in Europe meant Group-A racing. However, high costs forced the larger-scale series out of existence, and races now began to be held according to new regulations tailored to each country's particular conditions. The BTCC and DTM were introduced in late 1980 and late 1984 respectively. Especially in the DTM, to compensate for unfairness caused by diversity, individual regulations were set down. Minimum weight is assigned according to drive power, and as long as the condition is met, any modification is allowed, including engine replacement. Thus, machines reminiscent of the silhouette formula cars of old were now reborn.

At the same time, ballast is loaded onto winning cars in order to prevent one machine from capturing all the races in a series. Each event is divided into two sprint races to rivet the attention of the audience to the race at hand.

In the early stages of the DTM, the Mercedes Benz 190E and BMW M3 were the main contenders. However, by 1990 the value of the DTM was gradually recognized by other major auto manufacturers, and when Audi and Opel joined in, causing increased competition, the series had succeeded in gaining the attention of the entire world.

However, at the end of 1992, the Mercedes Benz 190E dominated the series

and the DTM was in danger of losing popularity. However, in 1993, the Alfa Romeo 155 V6T1 participated with a 420 PS 2.5 liter V6 engine and powerful advantages such as full-time 4WD, and it sent the formerly unbeatable Mercedes down to defeat. This news caused the series to capture the attention and enthusiasm of people as far away as Japan.

But Mercedes Benz was hardly about to give up because of a single defeat. The Mercedes Benz Class-C was designated as the firm's machine for 1994. It differed significantly from the 190 series, and was created with the ultimate mission of dominating the series and recapturing the championship title from Alfa Romeo. This is the first mass-produced car that was created specifically for racing.

The machine boasts no showy contoured foils or vents, but instead utilizes its graceful body line for sound aerodynamics, while relying on its powerful 2.5 liter V6 engine with rear axle drive to get the job done. The sight of this machine barreling full-throttle down the straightway proves it more than up to the task of upholding the dignity and honor of its progenitor.

The Class-C, assembled to take full advantage of DTM regulations, is now battling it out with none other than its formidable nemesis Alfa Romeo, displaying all the fierceness and resolve of a former champion returned to recapture the glory.

Fujimi, renowned for pleasing racing fans with racing car line-ups including the Mercedes Benz 190 and BMW M3 of the DTM, the Skyline GT-R and BMW M3 from the All Japan Touring Car Championship Series (JTC), as well as touring car versions of the Porsche Carrera 2 from the Carrera Cup Japan, decided to scale-modelize and release one of the hot contenders in the DTM.

And so it is with great pride that we announce the AMG Mercedes Benz Class-C, rival of the Alfa Romeo 155 V6, and the chief focus of attention this season. There are three markings to choose from: "D2", "SONAX TABAC", or "PROMARKT". The decals are as large as those of the previously-released model Mercedes Benz 190EV II, employing the markings that were used for enticement of the 2000 Olympics to Berlin. With such large decals, the model shows off its elegant, blockbusting Class-C form to great advantage. Unlike the 1993 DTM contender, this year's Mercedes Class-C is something to watch, and it will make a fine addition to any collection.

Written by Mr. Takeo Yamashita
Editor, Auto Modeling



Bolt on

1:12
scale

BOLT ON CAR SERIES

Using bolt-on technology, these kits recreate the engines with such super precision you can almost hear them roar. Steering is operational. And because it's "Bolt-On", screws are used, instead of adhesives, so the model can be finished to perfection. Some, feature die cast bodies.



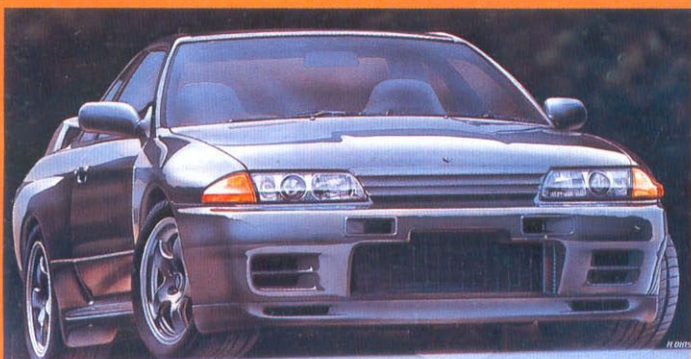
14101 NISSAN SKYLINE GT-R '90



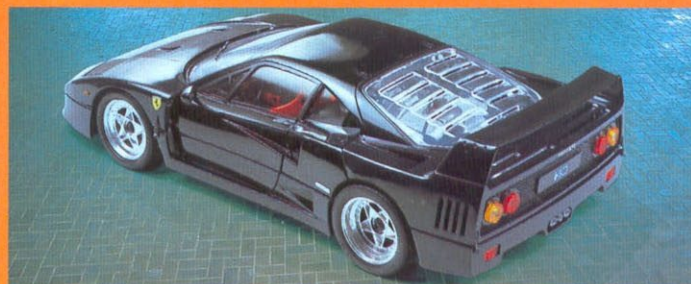
14108 Gr.A GT-R (JECS)



14110 Gr.A GT-R (TAISAN)



14112 NISSAN GT-R NISMO



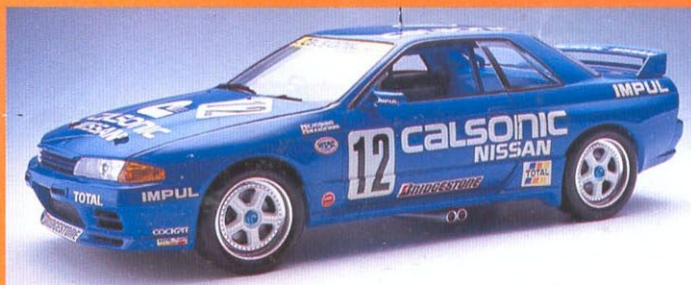
14002 FERRARI BLACK F40 (DIE CAST)



14003 FERRARI F40 RED (DIE CAST)



14107 Gr.A GT-R (KYOSEKI)



14109 Gr.A GT-R (CALSONIC)



14111 NISSAN GT-R V-SPEC



14113 GRA. BP SKYLINE GT-R '93

Enthusiast

ENTHUSIAST MODEL

1:16
scale

The impressive 1/16 scale size gives these models a realism difficult to find on the interiors and the precision engines, these well known, exotic sports match. From moving parts like doors that open and close, to the details cars are sure to wet the hobbyist's appetite for automotive modeling.



10105 KÖENIG TESTAROSSA



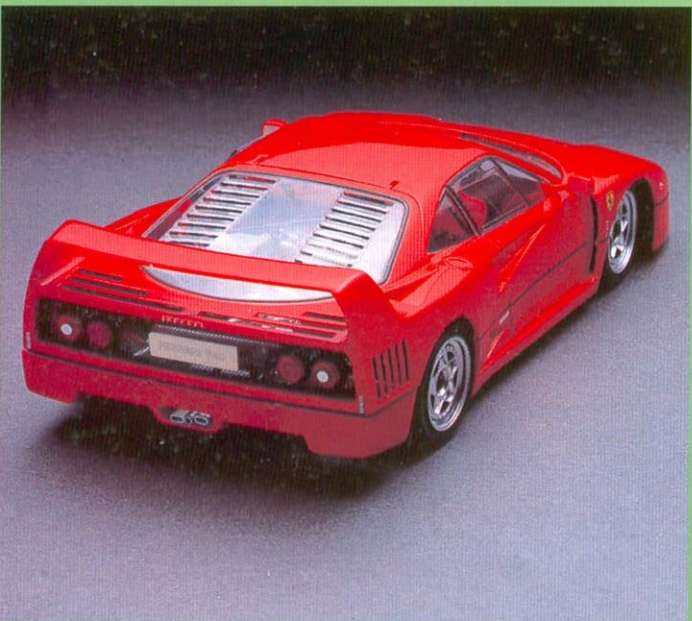
10106 FERRARI 288 GTO



10108 TESTAROSSA SPIDER



10109 KÖENIG COUNTACH 5000



10110 FERRARI F40



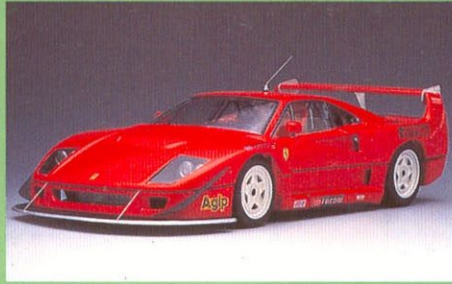
10111 PORSCHE 959 COMPETITION



10112 COUNTACH 5000 '86 & '88



10113 COUNTACH 25TH ANN.



10116 FERRARI F40 LE MANS



10118 NISSAN R380



10119 FERRARI BB512 (RED)



10120 FERRARI TESTAROSSA RED



10121 LAMBORGHINI MIURA



10122 ALFA ROMEO T33 COUPE



10123 JAGUAR PIRANA



10124 FERRARI F40 BLACKSTAR



10125 288 GTO YELLOW



10126 KÖENIG TESTAROSSA BLACK



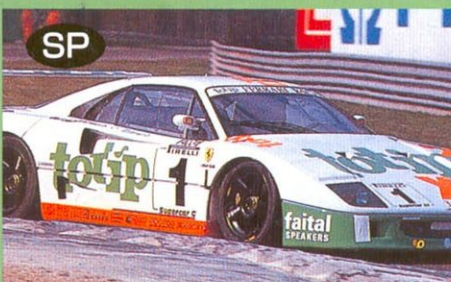
10127 FERRARI TESTAROSSA BLACK



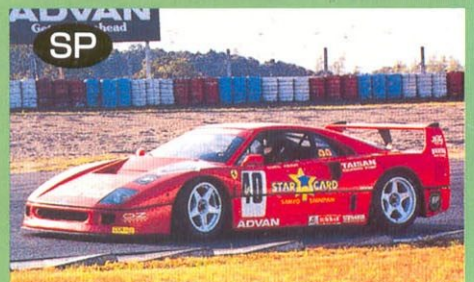
10130 ITALIANO GT F40 '93



10133 ITALIANO GT F40 Colombo



10134 ITALIANO GT F40 '94



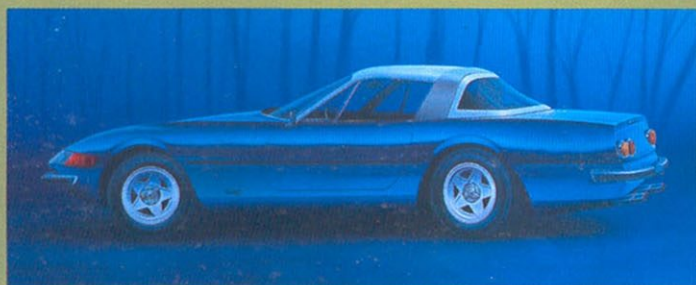
10135 JGTC TAISAN F40 '94

Enthusiast

1:24
scale

ENTHUSIAST MODEL

This broad series includes vintage, popular and classic models. Each has been carefully sculptured to include detailed engines and interiors. From the decaling to the exhaust, this is modeling perfection.



08102 FERRARI 365GTB/4 DAYTONA SPECIAL



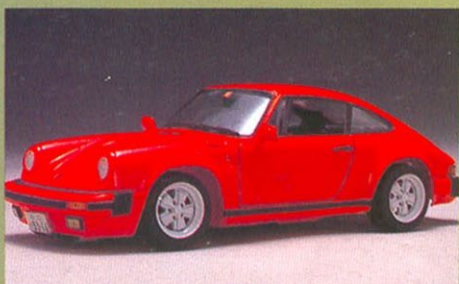
08105 FERRARI 288GTO (YELLOW BODY)



08001 PORSCHE 911 TURBO '85



08002 PORSCHE 930 TURBO '75



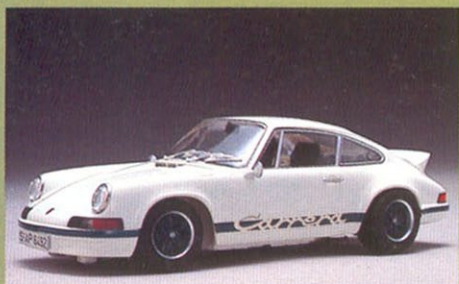
08003 PORSCHE 911 CARRERA '85



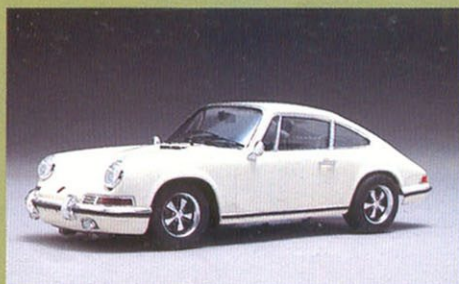
08004 PORSCHE 911 CARRERA CABRIOLET '85



08005 PORSCHE 911 CARRERA TARGA '85



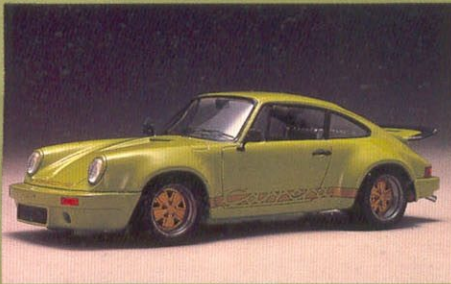
08006 PORSCHE 911 CARRERA '73



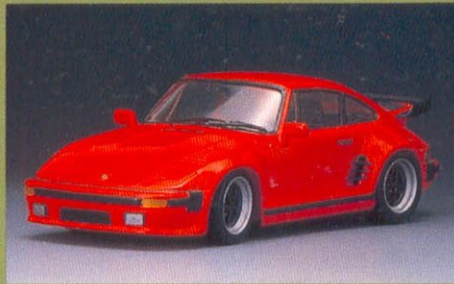
08007 PORSCHE 911 COUPE S '68



08009 PORSCHE 911 COUPE R '67



08010 PORSCHE 911 CARRERA RS 3.0 '74



08011 PORSCHE 911 FLAT NOSE



08012 BMW M635 CSi



08016 DINO 246GT LATTER TYPE



08018 DINO 246GT SPIDER



08019 COUNTACH 5000



08020 COUNTACH LP500S



08022 FERRARI 288 GTO



08023 365GTB/4 DAYTONA COUPE



08024 365GTS/4 SPIDER



08027 PORSCHE 356B/C 2000GS CA COUPE



08029 PORSCHE 356B 1600S R.S.T.



08030 PORSCHE 356A 1500GS CA COUPE



08031 PORSCHE 356A SPEEDSTER



08032 PORSCHE 356A CABRIOLET



08035 KÖENIG COUNTACH 5000

Historic Racing

1:24
scale

HISTORIC RACING CAR

Get involved in making the kits in this series, and you'll not only end up with great looking models, you'll learn a bit of history too. The collection includes vintage race cars as well as today's latest models.



12101 FORD GT-40 Mk-II 1ST



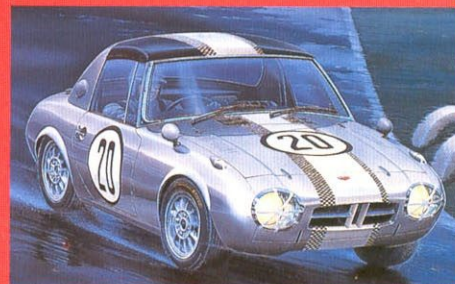
12104 FERRARI 330 P-4



12105 FERRARI F40 LE MANS



12107 NISSAN KPGC-10 (RACER)



12108 TOYOTA S800 (RACE TYPE)



12109 HONDA S800 (RACE TYPE)



12110 DATSUN SR311 (RACE TYPE)



12112 NISSAN KPGC-10 (RACER)



12114 NISSAN RACER 4 DOOR



12117 HONDA S600 JGP

Real Sports

REAL SPORTS CAR

1:24
scale

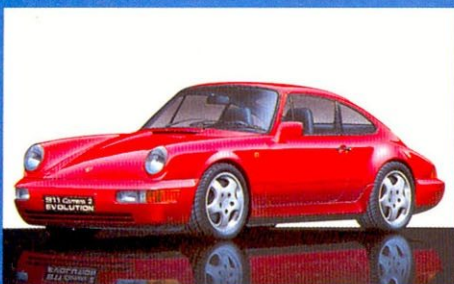
The world's most popular sports cars are reproduced in this collection. From beautiful convertibles, to sleek powerhouses, they are all here, and so is the realism. This is one of the most complete and broadest selections anywhere.



12022 KÖNIG COUNTACH 5000



12047 FERRARI 348tb



12049 PORSCHE CARRERA 2 EVOLUTION



12051 MERCEDES-BENZ 190E 2.5-16 EVOLUTION II



12053 500SL KÖNIG SPECIAL



12054 LAMBORGHINI DIABLO 4WD



12055 PORSCHE 911 CARRERA TURBO '92



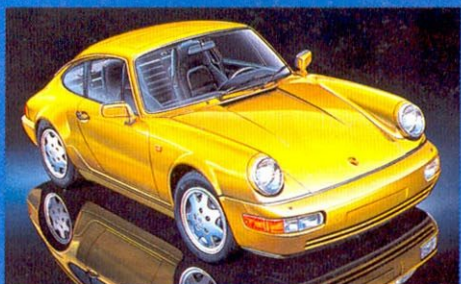
12056 BMW M5



12058 KÖNIG 500SL COUPE



12059 FERRARI 348tb BLACK STAR



12061 PORSCHE 911 CARRERA 2



12062 NEW 512TR BLACKSTAR



12063 NEW 512TR YELLOW



12064 BENZ 600SL



12065 MERCEDES-BENZ 600SL OPEN



12066 BMW SCITZER



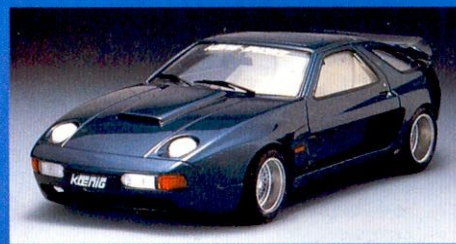
12067 BMW HARTGE H5



12401 FERRARI F40 (IMPROVED)



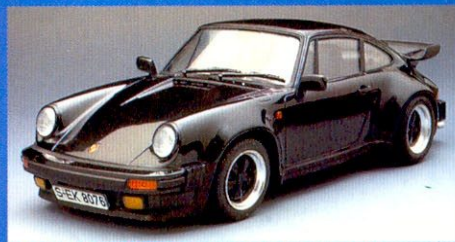
12402 KÖENIG TESTAROSSA COMP



12403 KÖENIG 928 S4



12404 KÖENIG 911 TURBO



12405 PORSCHE 911 TURBO



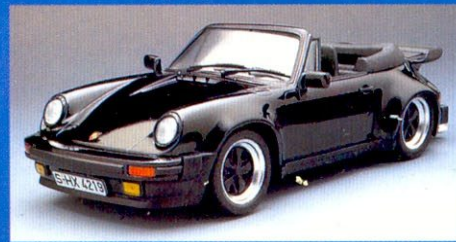
12406 PORSCHE 911 SPEEDSTER '88



12407 PORSCHE 911 FLAT NOSE



12408 PORSCHE 911 CARRERA '88



12409 PORSCHE 911 TURBO CABRIOLET



12410 PORSCHE 911 CARRERA CABRIOLET



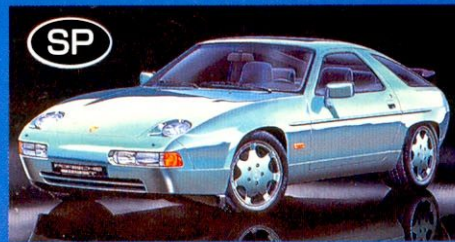
12411 COUNTACH 25TH ANN.



12412 COUNTACH 5000



12414 MERCEDES-BENZ 500SL '90 H. TOP



12415 PORSCHE 928 GT



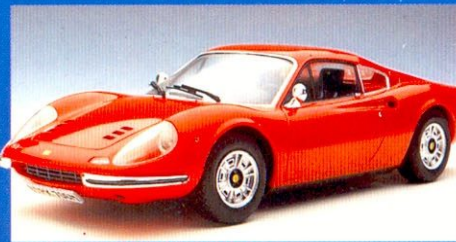
12416 SKYLINE KPGC GT-R '60s



12417 PORSCHE 911 CARRERA 4



12418 MERCEDES-BENZ 190E 2.5-16 EVOLUTION



12419 DINO 246GT



12420 DINO 246GTS SPIDER



12421 LAMBORGHINI DIABLO



12422 FERRARI 348ts



12423 KÖENIG TESTAROSSA SPIDER



12424 PORSCHE 911 CARRERA 4 CABRIOLET



12425 MERCEDES-BENZ 500SL (O/T, S/T)



12426 NISSAN SKYLINE GT-R,NISMO



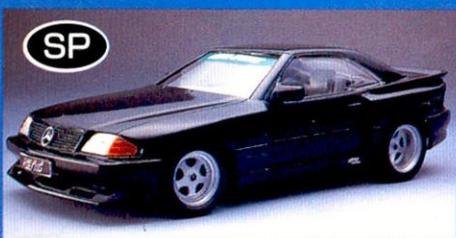
12427 PORSCHE 911 CARRERA 4 TARGA



12428 YELLOW DIABLO



12437 PORSCHE 911 TURBO BLACKSTAR



12438 KÖENIG 500SL BLACK STAR



12439 MERCEDES-BENZ 300CE SL GRILL



12440 HONDA S800



12441 TOYOTA S800



12442 DATSUN SR311



12443 KÖENIG SL OPEN BLACK



12444 FERRARI 512TR EUROPE



12445 FERRARI 512TR AMERICA



12446 KÖENIG DIABLO



12450 PORSCHE 911 3.8RSR



12451 FERRARI 348TB CHALLENGE

Light Weight Sports

1:24
scale

LIGHT WEIGHT SPORTS CAR



03252 NISMO K11 MICRA/MARCH



12501 ROVER MINI COOPER 1.3



12502 ROVER MINI MAYFAIR 1.3



12503 ROVER MINI 25th ANNIVERSARY



12504 ROVER MINI CLUBMAN



12505 ROVER MINI RACE



12507 ROVER MINI MONTE-CARLO 30TH



12508 GOLF GTI



12509 AUTOBIANCHI



12510 ROVER MINI VINTAGE



12511 MARCH TOMMY KAIRA M-13

Arv & Drv Car

ARV & DRV CAR SERIES

1:24
scale

Recreating the thrills of off-road action, these tough looking sport and utility vehicles are complete, and can be motorized.

(Motor not included.)



16001 MITSUBISHI PAJERO



16002 TOYOTA LAND CRUISER



16003 MITSUBISHI PAJERO (FULL OPTION)



16004 TOYOTA LAND CRUISER (FULL OPTION)



16005 MITSUBISHI PAJERO (SKI VERSION)



16006 TOYOTA LAND CRUISER (SKI VERSION)



16007 ISUZU BIG HORN / LOTUS



16008 ISUZU BIG HORN / IRMSHER



16010 ISUZU BIG HORN / SKI VERSION



16021 MITSUBISHI MONTERO



16022 TOYOTA LAND CRUISER EXPORT



16023 TOYOTA LAND CRUISER '92



16031 D.RV MITSUBISHI PAJERO



16032 D.RV PAJERO FULL OPTION



16033 D.RV PAJERO /SKI VERSION



16034 D.RV MITSUBISHI MONTERO



03259 SUZUKI WAGON R 4WD SURFING

Inch Up

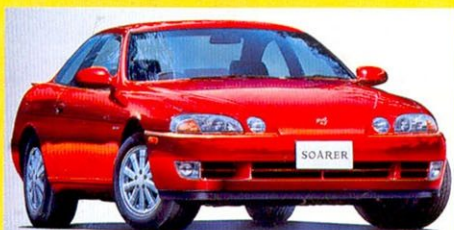
1:24
scale

INCH UP

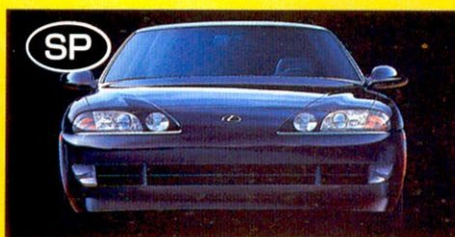
The cars in this series are popular street cars, including some of the most topical. Each kit contains the very latest set of wheels and low profile sport tires.



03231 TOYOTA SOARER 4.0GT LIMITED '90



03232 TOYOTA SOARER 2.5GT TWIN TURBO '90



03234 LEXUS COUPE '90



03235 HONDA NEW PRELUDE Si/EXP. '91



03236 TOYOTA AE86 TRUENO '83



03237 TOYOTA AE86 LEVIN '83



03238 HONDA CIVIC CR-X EXPORT '92



03239 NEW GOLF CL '92



03240 NISSAN 300ZX CONVERTIBLE AMERICA '91



03241 NEW GOLF VR6 '93



03242 NEW GOLF GTI



03243 7TH SKYLINE 4 DOOR '85



03244 SUZUKI JIMNY SPL '93



03246 NISSAN SILVIA/GAZZEL H.T. '83



03247 NISSAN GT-R V-SPEC II '94



03251 NISSAN MICRA/MARCH '93



03253 NISSAN MICRA/MARCH izf



03254 NISSAN MICRA/MARCH EXPORT



03255 SUZUKI WAGON R RX '93



03256 SUZUKI WAGON R RG-4 '94



03257 SUZUKI WAGON R CARIFORNIA '94



03258 SUZUKI WAGON R SUNROOF '94



03301 TOYOTA CROWN 2800 '83



03303 NISSAN SKYLINE 2000GT-R PGC-10'69



03304 TOYOTA CELSIOR '88



03305 NISSAN SKYLINE 2000GT-X'72



03306 NISSAN NEW CEDRIC 3.0 '83



03307 BMW M3 '82



03308 TOYOTA NEW CRESTA 2.5 '90



03310 NISSAN SKYLINE GT-R '89



03311 TOYOTA NEW SOARER '88



03312 TOYOTA SOARER 2800GT



03313 SKYLINE GTS-R '88



03315 NISSAN CEDRIC '86



03316 TOYOTA NEW MARK II 2.5 '90



03317 NISSAN SILVIA '88



03318 TOYOTA CROWN 3.0 '88



03319 TOYOTA MR-2 S/C '87



03320 NEW BMW 325i



03321 LEXUS LS400 '88



03322 AMG BENZ 190E '92



03323 NISSAN 180/200/240SX '88



03324 TOYOTA CROWN S/C '83



03325 TOYOTA SUPRA 3.0GT '87



03326 AUDI 90 2.3E '89



03327 HONDA CR-X GLASS TOP '89



03328 NISSAN 300ZX TURBO '89



03329 TOYOTA MARK II '87



03330 TOYOTA CRESTA '87



03331 TOYOTA CHASER '87



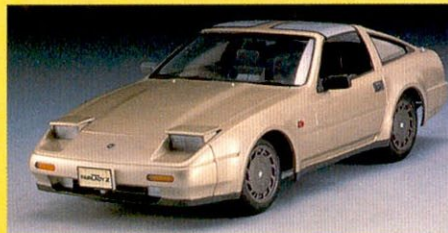
03332 NISSAN INFINITI Q45 '89



03333 BMW 535i '88



03334 MAZDA NEW SAVANNA RX-7 '85



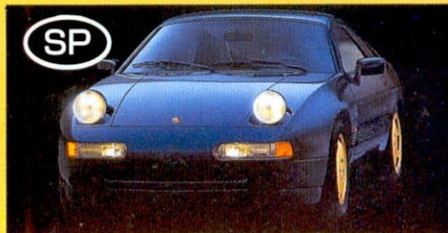
03335 NISSAN 300ZR '86



03336 HONDA PRELUDE '87



03337 NISSAN SKYLINE GTS '85 2dr



03338 PORSCHE 928S-4



03339 NISSAN CEDRIC '87



03342 GOLF II GTI 16V '89



03343 NISSAN SKYLINE GTS-t '88



03344 NISSAN LAUREL '89



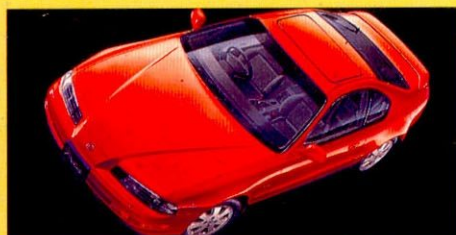
03346 BENZ 300CE-24 '88



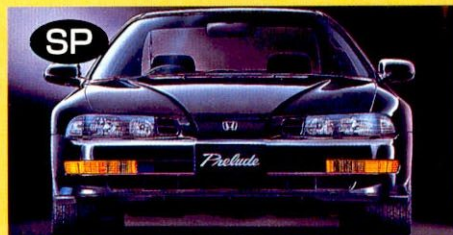
03348 SUZUKI SAMURAI '88



03349 HONDA CR-X '87



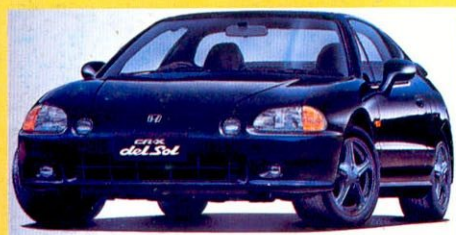
03353 HONDA NEW PRELUDE VTEC



03354 HONDA NEW PRELUDE Si '91



03355 HONDA NEW CR-X SiR '92



03356 HONDA NEW CR-X VXi '92



03357 NEW GOLF GL '92



03358 NISSAN 300ZX CONVERTIBLE JAPAN '92



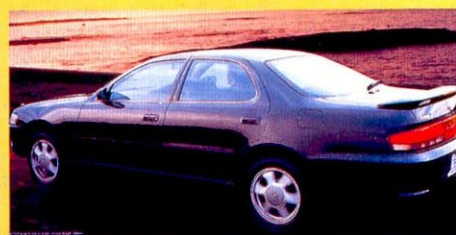
03361 TOYOTA MARK II '93 TOURER V



03363 TOYOTA MARK II '93 GRANDE G2.5



03364 TOYOTA CRESTA '93 SUPER LUCENT 2.5



03365 TOYOTA CRESTA '93 TOURER



03366 TOYOTA MARK II '93 GRANDE G3.0



03367 TOYOTA CRESTA '93 SUPER LUCENT 3.0



03370 TOYOTA NEW MR-2 '93



03371 SUZUKI ESCUDO/VITARA

Just Tuning

JUST TUNING SERIES

1:24
scale



18201 TOYOTA SOARER



18202 HONDA NEW PRELUDE 2.0Si



18204 NISSAN 300ZX



18206 TOYOTA SUPRA TURBO A



18208 MERCEDES-BENZ 300CE



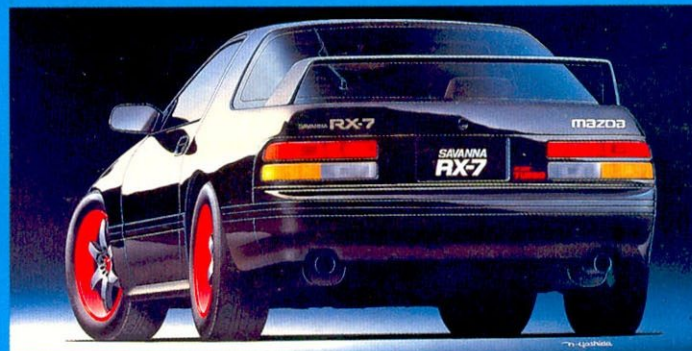
18203 NISSAN SKYLINE GT-R



18205 HONDA CR-X DELSOL



18207 NISSAN SKYLINE GTS-t



18209 MAZDA SAVANNA RX-7(FC3S)



18210 TOYOTA MARK II 2.5GT



18211 NISSAN SILVIA K's



18212 TOYOTA CRESTA 2.5GT



18213 TOYOTA NEW MR-2 '93



18214 NISSAN GT-R V-SPEC II



18215 TOYOTA CELSIOR



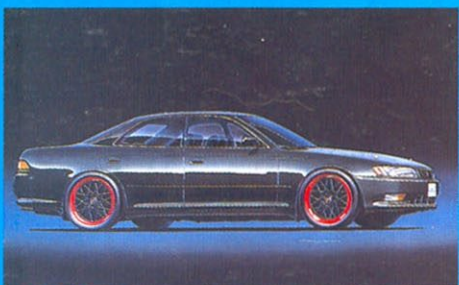
18216 NISSAN 180/240 SX



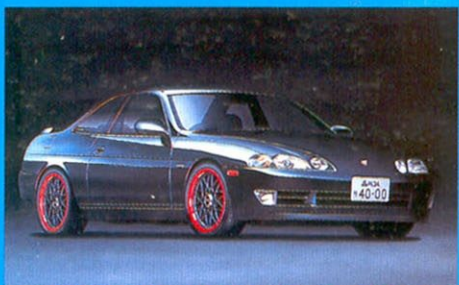
18217 TOYOTA MARK II '93 GRANDE G2.5



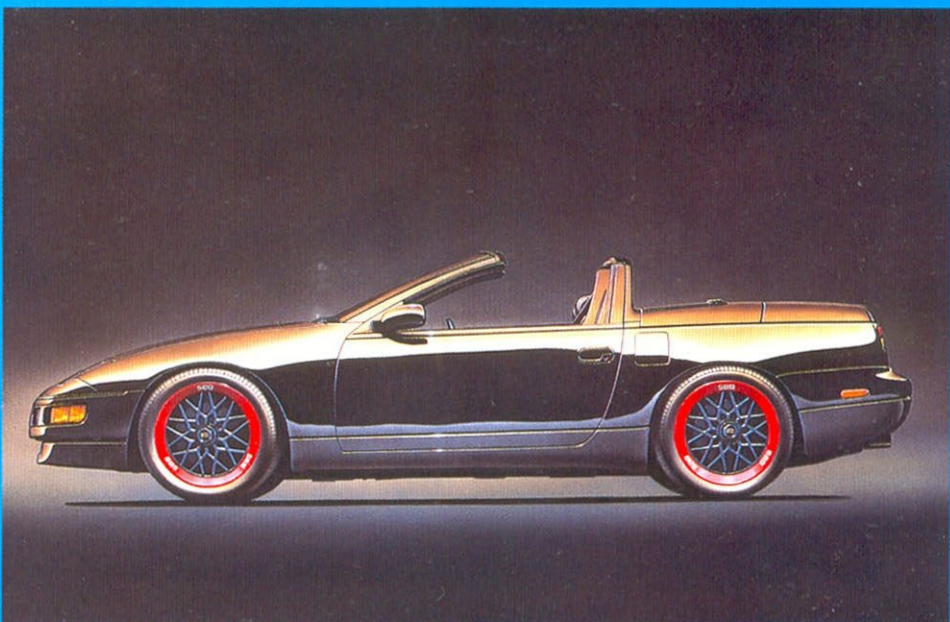
18219 TOYOTA NEW CRESTA G4



18220 TOYOTA NEW MARK II G4



18221 TOYOTA NEW SOARER 4.0



18222 NISSAN 300ZX CONVERTIBLE



18223 NISSAN LAUREL '89



18224 SOARER 2.5GT TWIN TURBO



18225 CRESTA '93 SUPER LUCENT 2.5

K Car

K CAR

1:24
scale



02011 DAIHATSU LEEZA



02012 SUZUKI ALTO WORKS



02013 DAIHATSU MIRA TURBO



02014 SUZUKI ALTO TWIN CAM



02017 DAIHATSU MIRA AERO



02018 DAIHATSU LEEZA AERO



02019 SUZUKI ALTO AERO



02020 TOHGE DAIHATSU MIRA



02021 TOHGE SUZUKI ALTO TWIN CAM

Core

1:48
scale

CORE SERIES



00001 NISSAN FAIRLADY 300ZR



00002 TOYOTA MR-2



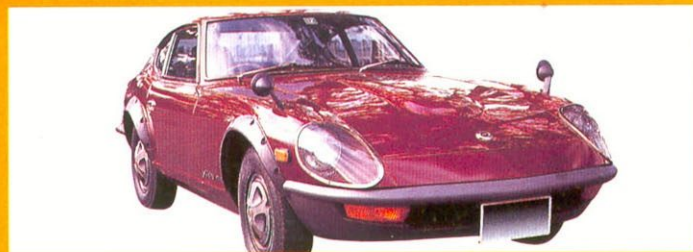
00003 HONDA PRELUDE XX



00004 TOYOTA SOARER 3.0



00009 TOYOTA TE27 LEVIN



00010 DATSUN 240ZG

Bike

1:12 & 1:15
scale

BIKE SERIES



15101 HONDA VT250F SINGLE (1:12)



15102 HONDA VT250F TANDEM(1:12)



15103 HONDA GL1100 GOLD WING(1:15)



15104 HONDA GL1100 INTERSTATE(1:15)

Tohge

TOHGE SERIES

1:24
scale

These are models of popular street cars that have upgraded accessories for greater performance. Each includes sponsorship decals, and is at home running on flat or more challenging terrain.



04001 TOHGE LEVIN



04002 TOHGE CR-X



04003 TOHGE TRUENO



04004 TOHGE MR-2 '87



04005 TOHGE SUPRA TURBO A



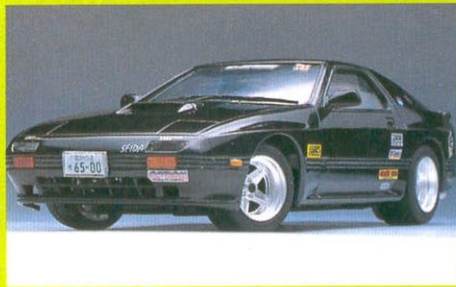
04006 TOHGE SKYLINE GTS-R



04007 TOHGE NISSAN 300ZR '87



04008 TOHGE SKYLINE GTR '89s



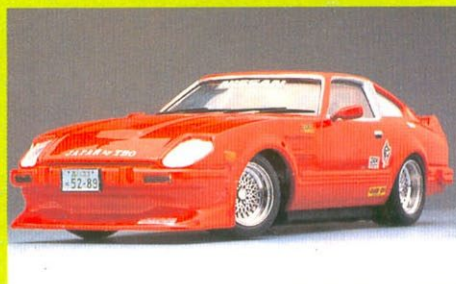
04009 TOHGE MAZDA RX-7



04010 TOHGE NISSAN 180SX



04011 TOHGE NISSAN 300ZX '90



04012 TOHGE NISSAN 280Z



04013 TOHGE SKYLINE GT-R '90



04014 TOHGE SILVIA '89



04016 TOHGE SKYLINE 2000GT-X



04017 TOHGE SOARER 2800GT



04018 TOHGE STARION



04019 TOHGE SKYLINE GTS-t



04020 TOHGE SKYLINE GTS-R



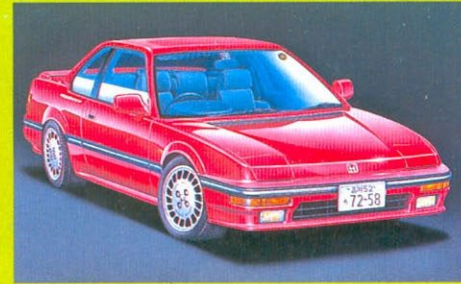
04024 TOHGE NEW MR-2 '93



04025 TOHGE TOYOTA CHASER



04026 TOHGE TOYOTA CELICA XX



04221 TOHGE PRELUDE 2.0Si

Touring Car

TOURING CAR SERIES

1:24
scale

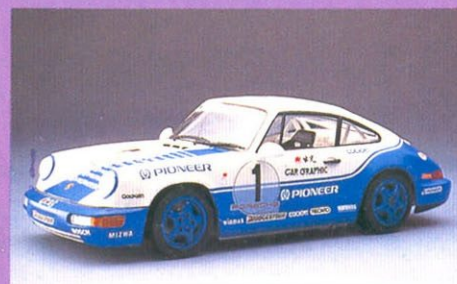
These are racing versions of popular street cars.
The kits are highly detailed and complete with
colorful sponsorship decals.



06114 AXIA GT-R



06115 TAISAN GT-R '91



06123 CARRERA CUP JAPAN A



06124 CARRERA CUP JAPAN B



06125 CARRERA CUP JAPAN SPL



06126 TAISAN GT-R '92



06127 BMW M3 '93(SOGOKEIBI)



06128 Gr.A GT-R '93(CALSONIC)



06129 BMW M3 '93(AUTOTECH)



06130 Gr.A GT-R '93(KYOSEKI)



06133 Gr.A GT-R '93(FET)



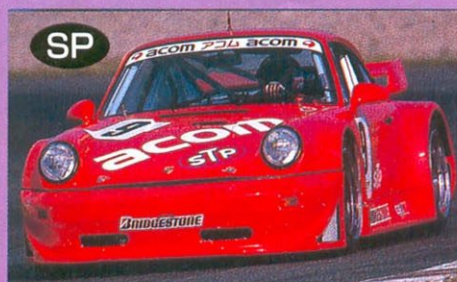
06135 190EVO.II GP.A(BERLIN2000)



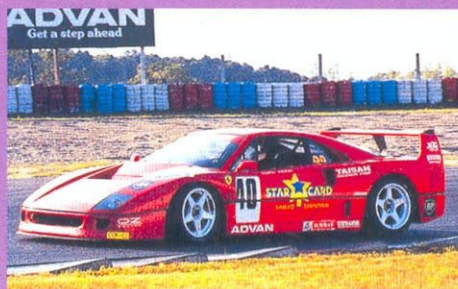
06137 CARRERA CUP JAPAN A'93



06139 BP NISSAN GT-R '93



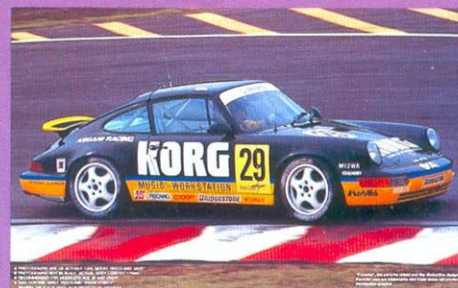
06140 JTCC PORSCHE RSR 3.8



06141 JGTC F40 TAISAN



06142 MERCEDES-BENZ DTM '94 'D2'



06145 KORG KEGANI CARRERA 2



06146 MERCEDES-BENZ DTM '94 'SONAX/TABAC'



06147 JGTC COUNTACH

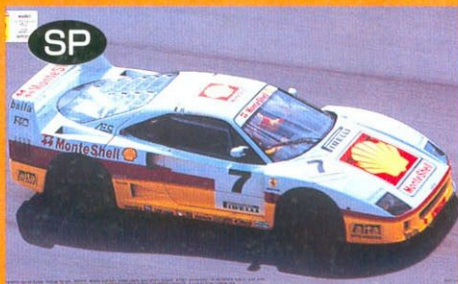


06148 MERCEDES-BENZ DTM '94 'PROMARKT'

Super Car GT

SUPER CAR GT SERIES

1:24
scale



06201 FERRARI F40



06202 FERRARI 348tb



06203 PORSCHE TURBO



06205 FERRARI F40 COLOMBO



06206 PORSCHE 911 3.8 RSR



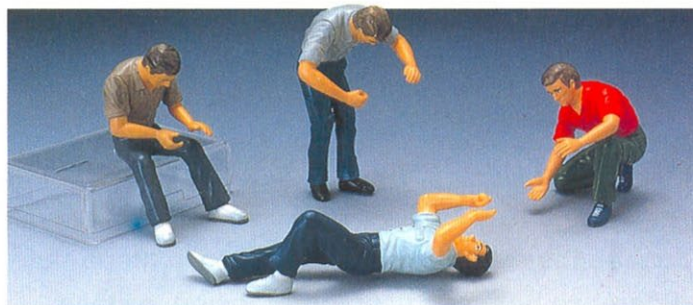
06207 FERRARI F40 TOTIP

G & T

1:24 scale

GARAGE & TOOLS

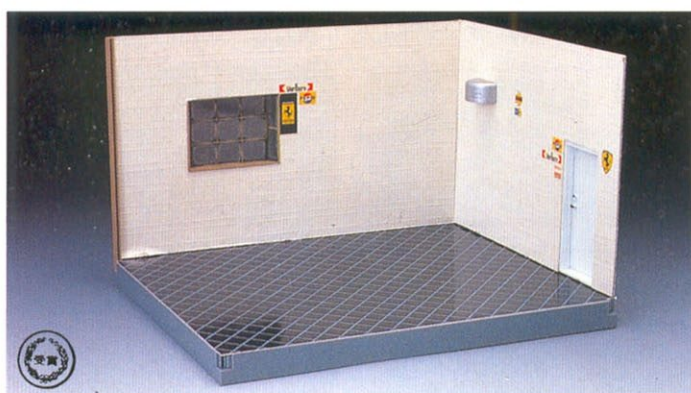
These were designed to let you create automotive dioramas and put finishing touches on your model autos. You'll find everything from garage tools, and hop up parts, to automotive figures like drivers and mechanics, to windshield wipers, spark plug cords, and more . . . all designed to bring modelling to life.



11003 MECHANIC FIGURES



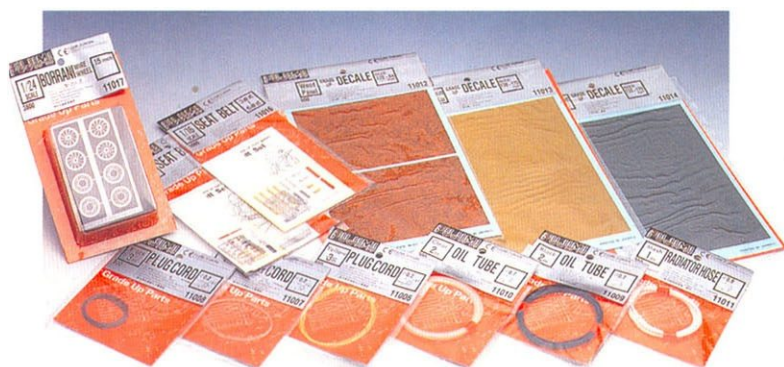
11004 DRIVERS FIGURES



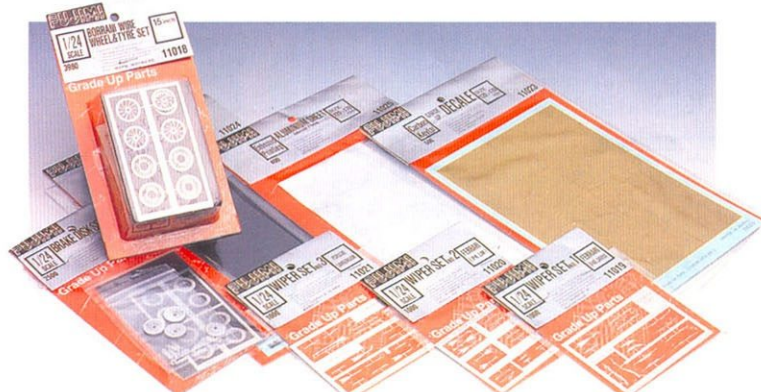
11031 CAR ACCESSORY (GARAGE)



11032 CAR ACCESSORY (TOOLS)



11101 GRADE UP PARTS ASSORTMENT NO.1



11102 GRADE UP PARTS ASSORTMENT NO.2

11006	SUPER-FINE PLUG CORD (YELLOW ϕ 0.2)
11007	SUPER-FINE PLUG CORD (RED ϕ 0.2)
11008	SUPER-FINE PLUG CORD (BLACK ϕ 0.2)
11009	SUPER-FINE PLUG CORD (BLACK ϕ 0.7)
11010	SUPER-FINE PLUG CORD (CLEAR ϕ 0.7)
11011	SUPER-FINE PLUG CORD (MESH ϕ 0.7)
11012	GRADE UP DECALE (WOOD PANEL)
11013	GRADE UP DECALE (KEVLAR)
11014	GRADE UP DECALE (FIBER)
11015	1/24 SEAT BELT SET
11016	1/16 SEAT BELT SET
11017	BORRANI; WIRE WHEELSET ※ALUMINUM

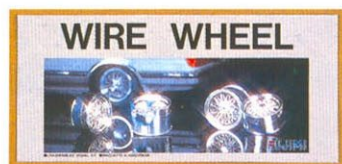
11018	BORRANI; WIRE WHEEL&TYRE SET
11019	1/24 WIPER SET No.1
11020	1/24 WIPER SET No.2
11021	1/24 WIPER SET No.3
11022	1/24 BRAKE DISK SET
11023	1/24 GRADE UP DECALE (KEVLAR II)
11024	1/24 GRADE UP DECALE (FIBER II)
11025	EMBOSSED ALUMINUM SHEET

T & W

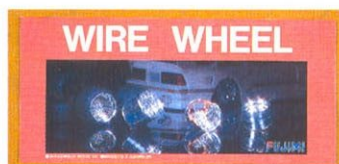
1:24
scale

TYRE & WHEEL SET

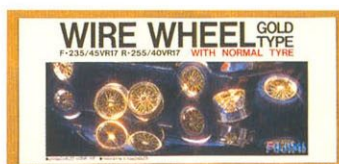
Just as the right tires and wheels can mean the difference between winning or losing, or take you from average to great performance, so too with your models. This collection of 1/24 scale tires, wheels and brake discs let you accent your vehicle, soup it up and add variety to your collection.



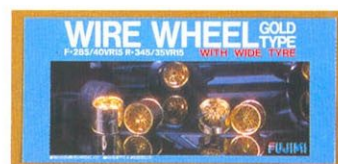
19013 1 INCH UP TYRE & WIRE,WH



19014 WIDE TYRE & WIRE,WH



19015 GOLD WHEEL SET (FOR ID)



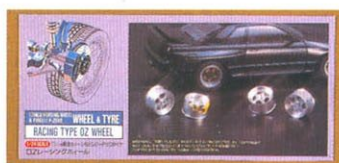
19016 GOLD WHEEL SET (FOR KW)



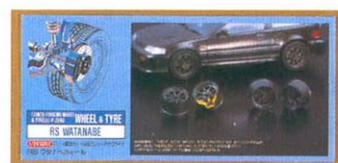
19117 SI TYRE & WHEEL (OZ,LA)



19118 SI TYRE & WHEEL (OZ,PO)



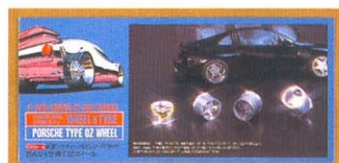
19119 SI TYRE & WHEEL (OZ)



19120 SI TYRE & WHEEL (RS)



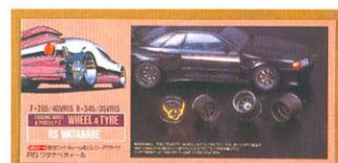
19121 345 TYRE & WHEEL (OZ,LA)



19122 345 TYRE & WHEEL (OZ,PO)



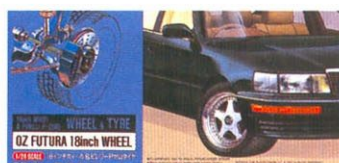
19123 345 TYRE & WHEEL (OZ)



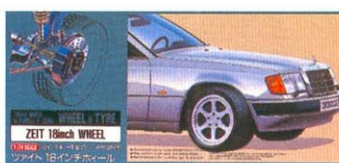
19124 345 TYRE & WHEEL (RS)



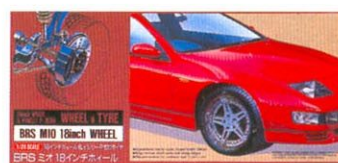
19131 18-INCH TYRE&WHEEL (BBS)



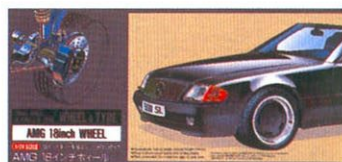
19132 18-INCH TYRE&WHEEL (OZ)



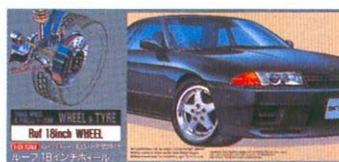
19133 18-INCH TYRE&WHEEL (ZEIT)



19134 18-INCH TYRE&WHEEL (BRS)



19135 18-INCH TYRE&WHEEL (AMG)



19136 18-INCH TYRE&WHEEL (RUF)



19140 NOSTALGIC TYRE & WHEEL (LINEA SPORT)



19141 NOSTALGIC TYRE & WHEEL (BBS RS)



19142 NOSTALGIC TYRE & WHEEL (WATANABE)



19143 NOSTALGIC TYRE & WHEEL (IMPUL MESH)



19144 NOSTALGIC TYRE & WHEEL (SUPER VOLK)



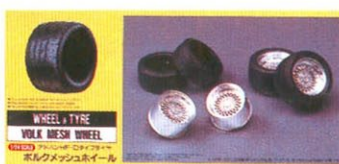
19145 NOSTALGIC TYRE & WHEEL (AMG)



19146 NOSTALGIC TYRE & WHEEL (SPEED)



19147 NOSTALGIC TYRE & WHEEL (BBS)



19148 NOSTALGIC TYRE & WHEEL (VOLK MESH)



19149 NOSTALGIC TYRE & WHEEL (LINEA SPORT)

HALF CENTURY FROM THE END OF THE PACIFIC WAR.

Next year will mark the 50th anniversary of the end of that abhorrent conflict known as the Pacific War. Perhaps it was an inevitable milestone along the path to the present-day prosperity of Japan, but be that as it may, Japan's decision to set out on this war of aggression, and the defeat that ensued, are incontrovertible facts of history. While it may be impossible to forget these facts, it would never do to overlook the many lives that were scattered to the winds in that terrible conflagration.

It is the duty of those of us alive today to accurately pass on their memories, and to see to it that the mistakes of that era are never again repeated.

As our contribution to the commemoration of this momentous event, we at Fujimi are proud to announce new releases in the form of Imperial Army and Navy aircraft and an aircraft carrier. These are bound to create a stir among model enthusiasts, since all of them are items which have been overlooked and thus unavailable until now. And so it is with great pride that we now unveil the latest additions to our lineup.

First of all, the jewel in the crown: the lightning-swift Saiun fighter, catapulted into world renown by such remarkable performance that it became known as the fighter no enemy plane could catch.

The development of this carrier-based reconnaissance fighter, unprecedented anywhere in the world of its time, was begun in June of 1942. Nearly a year had passed since the beginning of the Pacific War, and of several fighters planned after the commencement of hostilities, it was the only one ever to see action. The fighter employed the "Homare", a 2,000 hp class high performance engine that had just been developed, and the body of the aircraft was designed to be as light as possible to enhance high speed performance. A new generation of aerodynamic foil wing was employed for the main wings, and in response to the demanding conditions of carrier-based service, Fowler flaps were employed which reduced the wingspan by almost fifty percent, as were ailerons that descended in concert with the Fowler flaps, and variable horizontal stabilizers. The development of this machine and its high performance features set a new standard of technological excellence, and the results determined the lean, articulated exterior of the aircraft.

The carrier-based version differed little in terms of weight from the earlier carrier-based attack fighter Tenzan, but by reducing the frontal area to 3/4, and the main wingspan to 2/3, it achieved remarkable speed increases, recording 648 kph. Furthermore, after the war US military tests resulted in astonishing speeds as high as 695 kph, perhaps because of the higher quality fuel used by the Americans. In any event, this reconnaissance aircraft went beyond anything that had been dreamed of in Japanese fighter history, and the Saiun made a name for itself that lives on to this day.

And yet, it was only in June of 1944 that the Saiun actually saw action, and by this time the majority of full-scale Japanese battleships had already been sunk. In the war of attrition of that time, there were few opportunities to capitalize on the high speed performance of the aircraft, and so it was never able to realize its battle potential. It can well be said that the Saiun was an ill-fated masterpiece.

Fujimi proudly announces the release of three new model kits in 1/72 scale: the Saiun-11, the only version to be mass-produced (444 were manufactured); the night fighter version based on the 11 series, of which only a few units were produced, equipped with 20mm machine guns mounted on twin turrets; and the Saiun-kai, or revamped Saiun, which was fitted with exhaust turbines to further enhance performance. In addition to the sleek beauty of the exterior, the sharp grooves and fine detail combine to make these kits a thrilling addition to any collection, and an object of fascination for novice and enthusiast alike.

The only night fighter actually deployed by the Imperial Navy in the Pacific War, the Gekko, began as a result of Japan's somewhat belated entry into the race in Europe to develop a twin-engined long distance fighter. However, since Japanese engineers had never seriously considered applying twin engines, they demanded features that were beyond the technical limitations of the day, and the performance of the resulting fighter was mediocre at best.

Because of this, they decided to abandon the idea of deploying it as a fighter, and instead capitalized on its long distance flying capabilities to transform it into a reconnaissance aircraft. This plane was deployed and saw action in the south, but here again its performance was insufficient, and it was impossible to employ it as a reconnaissance craft either. This would normally have resulted in its disappearance into the shadows of history as a failure, but what saved the plane was the appearance of the American four-engined B-17 bomber.

This was because the Zero fighter had difficulty in attacking the B-17, but the design of this craft allowed for the birth of a new attack strategy. 20mm guns were diagonally juxtaposed on the fuselage above and below, and the plane would fly alongside the enemy bomber at a higher altitude, attacking the larger plane with the diagonal guns from the B-17's dead angle.

Thanks to this brainstorm, the Gekko succeeded in shooting down one B-17 after another, and it was catapulted into the spotlight as a bomber assassin and played a primary role as a night fighter from the southern front all the way to the skies over mainland Japan. The great irony of this development is that the

true value of the design was only discovered with the help of the bombers of the enemy.

Fujimi now proudly introduces three new kits: the world's first 1/72 scale model kit of the Gekko-21 with the graduated rear fuselage; the 2-Shiki land-based reconnaissance plane with two-step remote control gun turrets; and the Gekko-23 with the straight, sleek rear fuselage. Each of the kits boasts the fine-tooled grooves and detailed expression that goes beyond state-of-the-art. These definitive masterpieces outdo each other in terms of sheer excitement and authentic modeling realism.

Along with the Zero fighter, the other fighter employed by the Imperial Army in the latter days of the Pacific War was the Hayabusa. Heir to the concept of the 97-Shiki that had shot down so many Soviet fighter planes in the battle of Nomohan, this craft was designed with an emphasis on maneuverability. In the interests of lightness and compactness, it was poorly armed compared to the Zero fighter, and its range was also less than satisfactory when it made its debut as a light fighter aircraft.

A further perfected prototype was pitted against the 97-Shiki in performance drills, and while its speed was found to be excellent, maneuverability was judged inadequate, and for a time it was not adopted for deployment. However, as the invasion of China progressed, the need for this fighter came to be recognized, and it was at last officially deployed as the 1-Shiki fighter.

Now this was due to the ignorance of modern fighter aircraft on the part of the Imperial Army, since the plane, which could have surpassed the 97-Shiki if its maneuverability had been maximized at high speeds, only engaged in horizontal circling dogfights. It was for this reason that it was judged to lack maneuverability, and it is certain that the resulting delays in its deployment prevented it from developing its full potential.

The 1-Shiki made use of its superior maneuverability to prevail over American and British fighters in several battles, but owing to the inferior 7.82mm guns and the removal of protective armor, it gradually gave up its superiority. In the end, an overemphasis on weight reduction left the craft with a fragile body which impeded improvements in armor, so that by 1943 it had become completely unfit for service as a front line fighter.

And still, the 3-Shiki and 4-Shiki that succeeded it continued to experience numerous problems, and engineers were forced by the frail body of the aircraft to constantly add improvements until the war ended in defeat.

Fujimi now announces the release of the quintessential Hayabusa, the Hayabusa-1, whose sleek lines outweigh its powerless armaments to guarantee it a prominent place in any collection. The Hayabusa-1 has of course been reproduced in perfect detail, taking full advantage of the latest research material and the finest technology. This compact, spritely fighter is a delight to behold.

And finally, the Hosho, the most glorious of the many aircraft carriers in the Imperial Naval fleet.

Construction on this carrier was commenced in 1920, and while other countries had already deployed battleships that had been refitted to serve as aircraft carriers, the only ships at the time that were originally built as carriers were this one and the Hermes of the British Royal Navy, and since work was completed on the Hosho in 1922, earlier than the Hermes, this carrier holds the title for the world's first completed aircraft carrier originally built for that purpose.

The Hosho had a small bridge to the right of the deck, and was unique for its three short, outwardly collapsible funnels. It was a small carrier for its day, with two elevators and a deck length of 168m, but it enjoyed flawless operation, and contributed greatly to the development of later aircraft carriers for the Imperial Navy.

It saw action beginning with the Shanghai Incident in 1932, but from the beginning it had been something of an experimental craft, and it was mainly used for fleet training maneuvers. Then in September of 1935 it encountered a typhoon during an exercise, and the bow was torn off. Together with the repairs to the bow and other enhancements, the funnels were now fixed in the outward, diagonal position.

In 1942 the Hosho was employed as a training carrier, but since the deck was so short, it was extended to 180m, allowing carrier-based aircraft of the day to take off and land. However, this modification made deployment on the open sea impossible due to the high waves, and it thus became a dedicated training vessel for coastal waters. For this reason, the Hosho remained undamaged even after Japan's defeat, and it was active in such missions as repatriating troops from the southern front until its dismantling in 1947.

Fujimi now takes full advantage of its technical expertise to introduce in kit form the Hosho, the world's first dedicated aircraft carrier. The scale is the standard: 1/700, and since this was originally a small carrier the kit is less than 25cm in length, but this makes the fine detailed expression—normally seen only in larger-scale kits—all the more exquisite. The Hosho speaks volumes about aircraft carrier history, and will make a cherished addition to any collection.

Written by **Mr. Hitoshi Goto**

Air Craft

AIR CRAFT SERIES

Flights of fantasy begin with these thrill-to-build aircraft. Complete with armaments, and faithful reproduction of the smallest details. The series includes not only the most topical and popular jets of today, but classic propeller aircraft from years past.

1:72
scale



20001 Ki-55 ADV. TRAINER IDA



20002 Ki-36 CIVIL COURLER



21002 ALPHA JET E



21004 BAe HAWK (FINISH AF)



21001 ALPHA JET A



21003 BAe HAWK (R.A.F.)



21005 Ki-36 IDA(CO-OPERATOR)



22001 ALPHA JET (P.D.FRANCE)



22002 BAe HAWK (RED ARROWS)



22003 BAe HARRIER GR-III (RAF)



22004 AV-8A HARRIER (USMC)



22005 AICHI D4Y2 "JUDY"



22006 AICHI D4Y3 "JUDY"



23001 BAe SEA HARRIER FRS.1



23002 NAKAJIMA B6N2 "JILL"



23003 NAKAJIMA B6N1 "JILL"



24001 NAKAJIMA B6N2 LATE TYPE



24002 F-16A PLUS "WOLF PACK"



24003 F-16A NORWEGIAN A.F.



24004 F-16A "THUNDERBIRDS"



24005 F-16B "WOLF PACK"



24006 F-16N "TOP GUN"



25001 AICHI B7A1 "GRACE"



25002 AICHI B7A2 "GRACE"



25007 AICHI D3A1 "VAL"



25008 AICHI D3A2 "VAL"



25009 A-7E "STINGERS"



25010 A-7B "BARNOWLS"



25011 A-7D "FLYING TIGERS"



25012 A-7A "BLUE BLAZERS"



25013 JU-87 B/R "IMMELMANN"



25014 JU-87 D-1,3,7 "DORA"



25015 JU-87 G-1 "TANK BUSTER"



25016 JU-87 D-5/D-8 "WHITE MILK"



25017 JU-87 G-2 "KANONENVOGEL"



25018 F-86F (J.A.S.D.F.)



25019 F-86F (U.S.A.F.)



25020 RF-86F (J.A.S.D.F.)



25021 F-86F "BLUE IMPULSE"



25022 A-4M "TOMCATS"



25023 OA-4M "OUTLAWS"



25024 A-4E/F "TOP GUN"



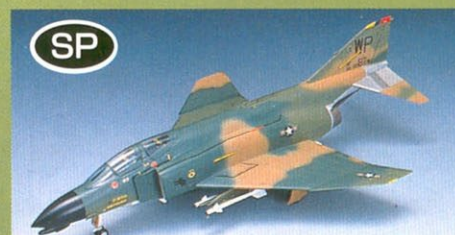
25025 TA-4J/F "BLACK BIRDS"



25026 A-4C "SPIRITS"



26001 F-4S "ROCKRIVER"



26002 F-4C/D "WOLF PACK"



26003 F-4N "VIGIRANTES"



26004 F-4EJ (J.A.S.D.F.)



26005 F-4E "MUSTANG"



26006 F-4G "WILD WEASEL"



26007 F-4F "WHITE MILK"



26008 F-4E "THUNDERBIRDS "



26009 F-4J "RED DEVIL"



26010 F-4J "BLUE ANGELS "



26011 F-4B "JOLLY ROGERS"



26012 F-4E "MiG KILLER"



26013 RF-4B "SPECTER"



26014 RF-4C "SHOGUN"



26015 RF-4E (J.A.S.D.F.)



26016 RF-4E "IMMELMANN"



26017 PHANTOM F3 TIGER



26018 MiG-29 FULCRUM



26019 A-4F "BLUE ANGELS "



26020 F-16C/D "BLACK OWLS"



27010 F7U-3 CUTLASS



27011 F7U-3P CUTLASS



27012 F7U-3M CUTLASS



27013 A-6E "EAGLES"



27014 EA-6A "BLACK BUNNY"



27015 KA-6D "TANKER"



27016 A-6A "KNIGHT RIDERS"



27017 FG.1 "SILVER JUBILEE"



27018 FGR.2 "FIRE BIRDS"



27019 F-4K "YELLOW BIRD"



27020 F-4M "SHARK TEETH"



27021 MiG-21bis "BLACK LYNX"



27022 MiG-21SMT "HUMPBACK"



27023 MiG-21PF(L) "INDIAN TIGER"



27024 MiG-21MF "JAY FIGHTER"



27025 MiG-21RF "PEEPING MiG"



27026 MiG-21PF(E) "PHANTOM KILLER"



28002 F-14A "JOLLY ROGERS"



28003 F-14A "BOUNTY HUNTERS"



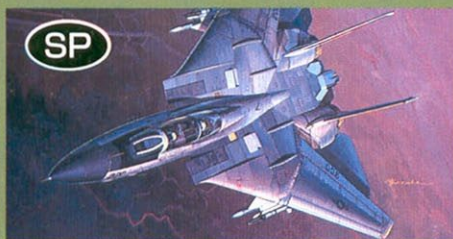
28004 F-14A PLUS "CHECK MATES"



28005 F-14A "ALI CAT" (I.R.I.A.F.)



28006 F-14A "HELLO INDEPENDENCE"



28007 F-14D "TOMCATTERS"



28008 F-14A "BOMBCAT I"



28009 F-14A "BOMBCAT II"



28018 F-14A "BLACK BUNNY"



30007 LTV F-8D CRUSADER



30008 DOUGLAS A-1H SKYRAIDER



30009 Bf-110 C/D



31011 E-2C HAWKEYE "SCREWTOPS"



31012 E-2CJ HAWKEYE (J.A.S.D.F.)



31013 E-2C HAWKEYE US NAVY



31014 TYPE 99 CARRIER DIVE-BOM



35101 B.F. FG1 "BLACK SPECIAL"



35102 OA-4M "SAMURAI"



35104 TYPE F-16C/D "JOAWS"



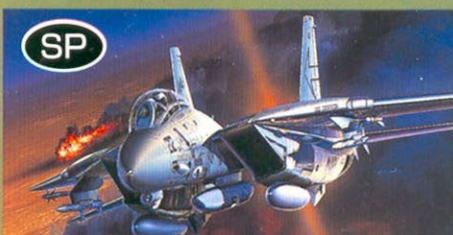
35109 F-14A "BLACK TAIL"



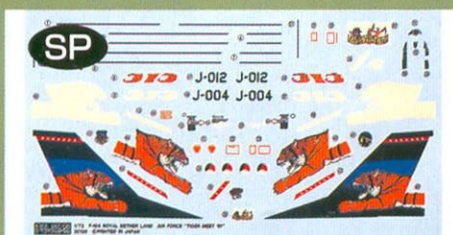
35111 F-4D PHANTOM



35115 MiG-29 FULCRUM "STORMY"



35117 F-14A PLUS TOMCAT



35120 F-16TIGER MEET/NETHERLAND



35121 A-7E DESERT STORM



35123 F-16A T.M. (BELGIUM)



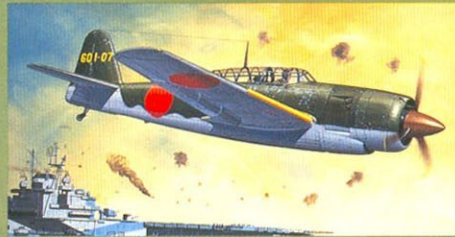
35126 MiG 21MF (GERMAN)



35128 AICHI D4Y2-S "JUDY"



35129 BYE-BYE FGR-II



35130 AICHI "JUDY" TYPE 43



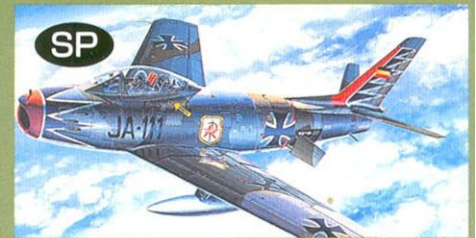
35133 JU87B STUKA SHARK MOUTH



35135 MiG-29 GERMAN A.F.



35136 A-6E LAST INTRUDER



35139 GERMAN F-86F "RICHTHOFEN"



35141 F-16ADF U.S. AIRFORCE



35142 A-6E "SUNDAY PUNCHERS"



35143 E-2C 10TH ANNIVERSARY



35144 F-16ADF "PUERTO RICO"



72001 SPITFIRE F.R.MK.XI VE



72002 SPITFIRE F.R.MK.14C



72003 GRIFFON SPITFIRE FMK14E



72004 GRIFFON SPITFIRE PRMK19



72005 SPITFIRE FRMK14E RAF



72006 SPITFIRE MK14E "Red Lion"



72007 F/A-18C "STINGERS"



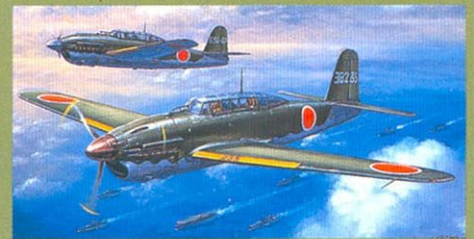
72008 SAIUN C6N1 MYRT



72009 GEEKO J1N2-S "IRVING"



72010 SPITFIRE MK 14E AFTER-D



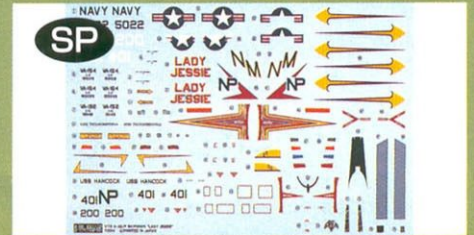
72011 AICHI D4Y2 "JUDY" SPECIAL



72012 NAKAJIMA JILL SPECIAL



72013 A-7E U.S. NAVY



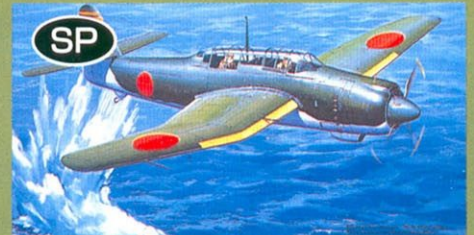
72014 A-4E/F SKYHAWK U.S. NAVY



72015 F/A-18D U.S. MARINE



72016 A-6E U.S. NAVY



72018 AICHI B7A GRACE SPL MARKING



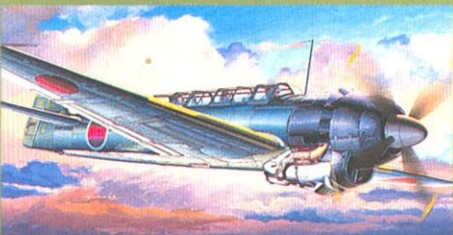
72019 SAIUN C6N1 MYRT NIGHT F.



72021 GEEKO J1N3 IRVING TYPE 23



72022 GEEKO G1N1 RECONNAISSANCE



72023 SAIUN C6N2 MYRT



72028 HAYABUSA KI-43 OSCAR (A)



Air Craft

AIR CRAFT SERIES

1:48
scale

This international collection is precisely detailed in a size that lets us recreate history with magnificent precision. 1/48 scale is the perfect vehicle for a serious aircraft modeler.



30001 Bf-109 G/K



30002 MITSUBISHI A6M2 ZERO TYPE21



30003 P-51D MUSTANG



30004 FOCKEWOLF FW190 A-6/9



30005 SPITFIRE Mk-V



30006 FOCKEWOLF FW190 D-9



30010 GRUMMAN F6F-5 HELLCAT



30011 F-5A FREEDOM FIGHTER



30012 DOUGLAS A-4E SKYHAWK



30013 DASSAULT MIRAGE III C



30014 DASSAULT MIRAGE III R



30015 DOUGLAS TA-4F SKYHAWK



31001 AICHI D3A2 "VAL"



31002 Bf-110 C/D



32001 F-4E PHANTOM II



32002 DOUGLAS F-15J EAGLE



32003 F-4EJ PHANTOM II



32004 F-15C EAGLE "SHOGUN"



32005 F-4E "THUNDERBIRDS"



32006 T-2 "BLUE IMPULSE"



32007 GRUMMAN A-6A INTRUDER



32008 MITSUBISHI F-1/T-2



33001 GRUMMAN F-14A TOMCAT



33003 F-14D SUPER TOMCAT



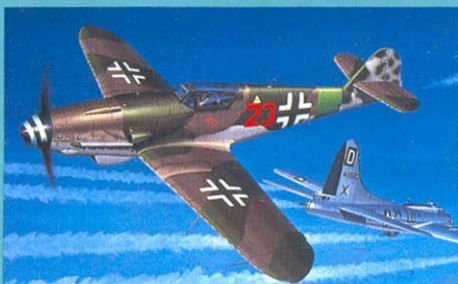
33004 F-14A "BLACK BUNNY"



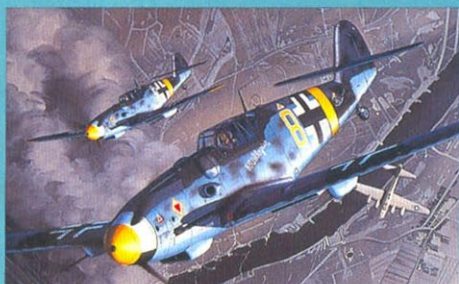
35119 F-15C "TIGER MEET"



35145 F-15J ANNIVERSARY



48001 Bf-109 K4



48002 Bf-109 G6



48003 Bf-109 G14/AS



48004 Bf-109 G6 "HARTMAN"



48005 Bf-109 G10 "Reich Defense"



48006 Bf-109 G6 "BOMBER KILLER"



48007 Bf-109 G6-AS "SPECIAL ESCORT"



48009 Bf-109 K4 "HERTS AS"



48010 Bf-109 G6 "TROP"



48011 Bf-109 G6 "SWISS GUSTAV"



48012 Bf-109 G10/R2 "RECONNAISSA"



48013 Bf-109 G6 "JABO"

Helicopter

HELICOPTER SERIES

1:72
scale

From moving blades to cockpit detailing, these helicopters are carefully reproduced. Kits are complete with authentic decals and suggested color schemes.



25003 HH-60D NIGHT HAWK



25004 UH-60A BLACK HAWK



25005 EH-60A QUICK FIX



25006 UH-60A RESCUE HAWK



27001 KV107 II-4 JGSDF "SHIRASAGI"



27002 CH-46D US NAVY "HOTEL CARIFORNIA"



27003 KV107 II-5 J.A.S.D.F.



27004 KV107 II-3 J.M.S.D.F.



27005 CH-46E/F U.S.M.C. TIGER



30016 AH-1S TOW COBRA US/JPN



30017 BELL AH-1J SEA COBRA



30018 BELL UH-1N IROQUOIS



30025 LYNX HAS MK-2/AH MK-1



30026 KAMAN SEASPRITE/LAMPS



31006 SIKORSKY SH-3H SEAKING



31007 SIKORSKY HSS-2B J.M.S.D.F.



33002 SIKORSKY HH-53C



35103 UH-1N "ORIENT EXPRESS"



35105 SEA LYNX



35118 CH53G "30 JAHRE"



35124 SEAKING "TIGER MEET"



35125 MH-60J (J.S.D.A.F.)



35127 MH-53HJ SEASTALLION



35131 UH-60J J.M.S.D.F.



35137 RH-53D



Helicopter

HELICOPTER SERIES

1:48
scale

The impressive realism possible because of the size of 1/48 scale give these helicopter kits a reality that brings each model to life. These choppers will take you on flights of imagination.



30020 SUD ALOUETTE III



30021 SA-341/D GAZELLE



30019 WESTLAND WASP MK-1



30022 MBB BO-105 PAH-1/M



30023 BELL OH-58 KIOWA



30024 HUGHES 500MD/OH-6D



31004 BELL AH-1G HUEY COBRA



31008 BELL AH-1S TOW COBRA



31009 BELL AH-1J SEA COBRA



31015 UH-1B BLACK BUNNY



35001 FLIGHT DECK CREW MD-3(1:72)



35003 FLIGHT DECK CREW SET(1:48)

35002 FLIGHT DECK CREW F.E. (1:72)

Military

MILITARY SERIES

1:76
scale

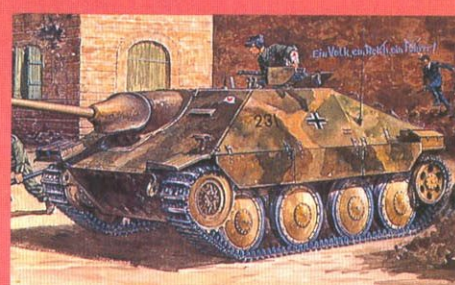
This 1/76 scale series offers precision tank, artillery and other armor as well as scale action figures, all with a wealth of battlefield detailing. Dioramas come to life. From the smallest facial nuance of a soldier, to the treads, tires and armaments of these meticulously reproduced kits, this is realism.



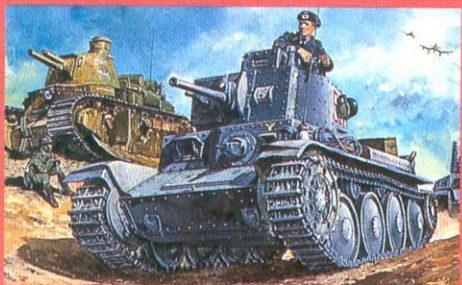
76001 G ARMY HEAVY TANK TIGER II



76002 GERMAN JAGDTIGER



76003 GERMAN TANK HETZER



76004 GERMAN TANK 38(t)



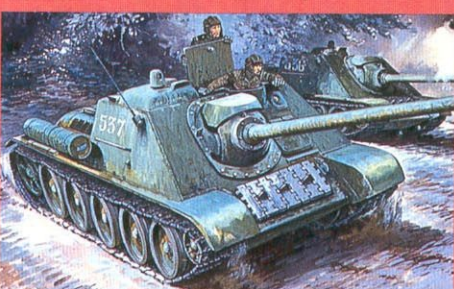
76005 GERMAN ELEPHANT



76006 GERMAN APC Sdkfz.251 B



76007 BRITISH VALENTINE



76008 RUSSIAN SU-85



76009 RUSSIAN T-34/85



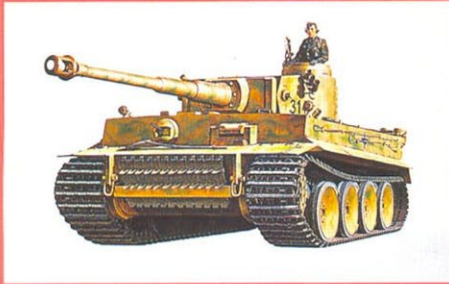
76010 JAPANESE SPG TYPE 1



76011 StuG. III Ausf G



76012 PzKpfW. IV Ausf J



76013 TIGER I



76014 JAGD PANTHER



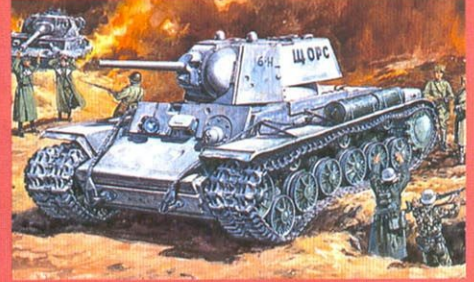
76015 WILLYS MB CAR



76016 M4A1 SHERMAN



76017 M36 TANK DESTROYER



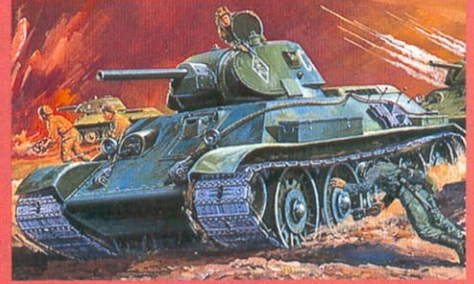
76018 RUSSIAN KV-1 A



76019 GERMAN Sdkfz.222



76020 KÜBELWAGEN & SIDECAR



76021 RUSSIAN T-34/76



76022 JAPANESE TYPE 97



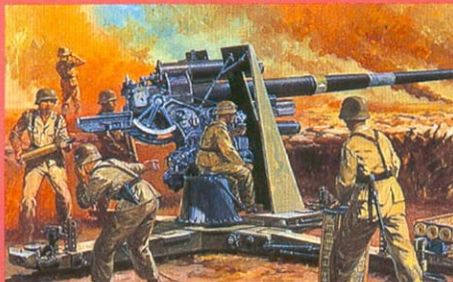
76023 GERMAN Pzkwf. I Ausf B



76024 10.5cm FLAK 36



76025 GERMAN INFANTRY



76026 GERMAN 8.8cm FLAK 18



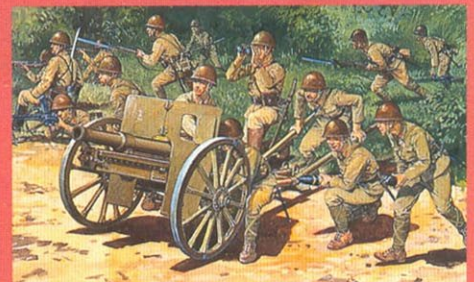
76027 U.S. INFANTRY



76028 G. INFANTRY W.GAS MASK



76029 BRITISH 8TH ARMY INFANTRY



76030 JAPANESE INFANTRY

Sea Way Model

1:700
scale

SEA WAY MODEL SERIES

This breathtaking armada includes ships from the U.S.. They offer endless possibilities for battleships, aircraft carriers and more. Each detailed from the tallest radar mast to a carrier's on-deck aircraft. They offer endless possibilities for dramatic ocean dioramas.



40036 DESTROYER AKIZUKI



40044 DESTROYER SHIMOZUKI



40074 SUBMARINE I-15 & I-46



41008 HEAVY CRUISER CHIKUMA



41060 LIGHT CRUISER ISUZU



41068 LIGHT CRUISER KINU



41086 LIGHT CRUISER OYODO



42012 BATTLESHIP HARUNA



40037 DESTROYER MATSU



40045 DESTROYER SAKURA



41004 HEAVY CRUISER TONE



41055 LIGHT CRUISER NAGARA



41065 LIGHT CRUISER NATORI



41078 LIGHT CRUISER JINTSU



41087 LIGHT CRUISER NAKA



42016 BATTLESHIP KONGO



42020 BATTLESHIP KIRISHIMA



42023 BATTLESHIP HIEI



42128 ADMIRAL GRAF SPEE



42129 DEUTSCHLAND



42130 ADMIRAL SCHEER



43025 AIRCRAFT CARRIER SHOKAKU



43049 AIRCRAFT CARRIER ZUIKAKU



43082 AIRCRAFT CARRIER RYUJYO



43083 CV HOSHO



44107 BATTLESHIP MISSOURI



44111 BATTLESHIP NEW JERSEY



44115 BATTLESHIP IOWA



44116 AIRCRAFT CARRIER LEXINGTON



44117 AIRCRAFT CARRIER SARATOGA



44123 HMS ARK ROYAL



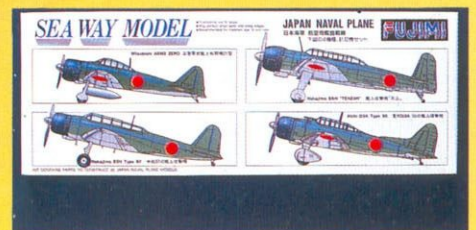
44124 HMS EAGLE



45101 U.S. NAVAL PLANE



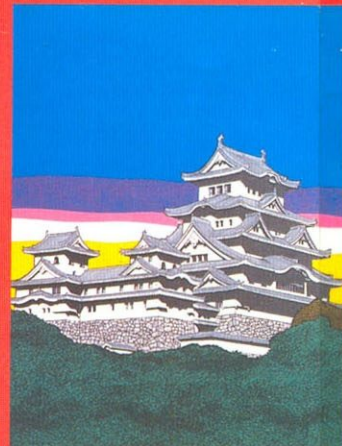
45102 ROYAL NAVAL PLANE



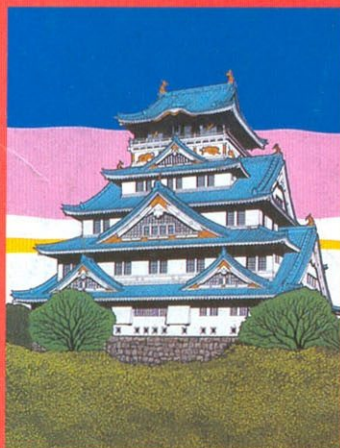
45106 JAPANESE NAVAL PLANE

Japanese Castle

JAPANESE CASTLE & TEMPLE



50001 HIMEJI CASTLE



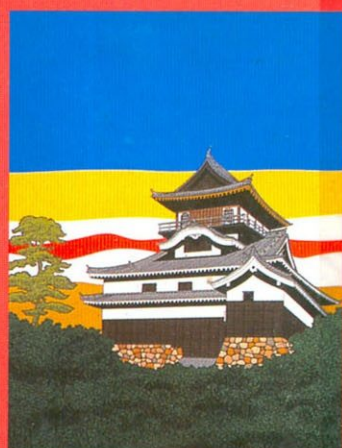
50002 OSAKA CASTLE



50003 EDO (TOKYO) CASTLE



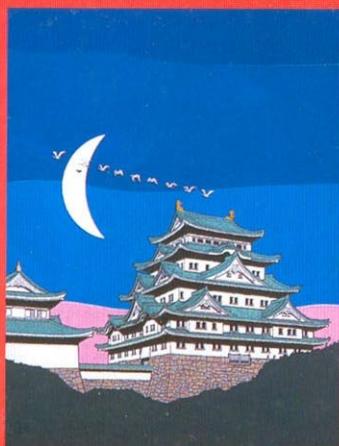
50004 KUMAMOTO CASTLE



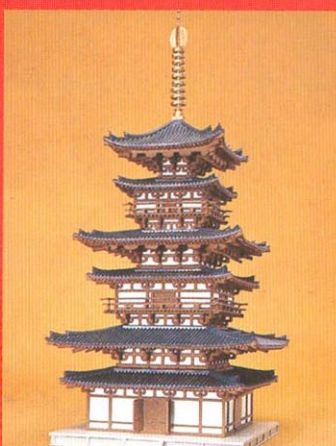
50005 INUYAMA CASTLE



50006 KOKURA CASTLE



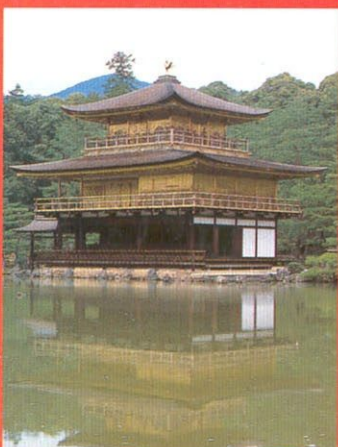
50007 NAGOYA CASTLE



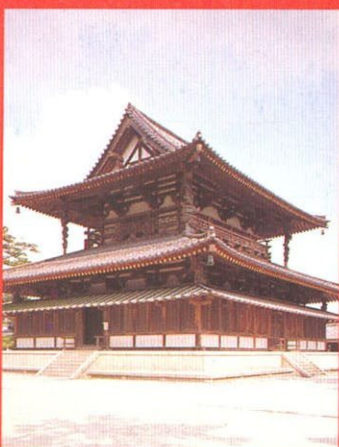
50011 TOHTOH



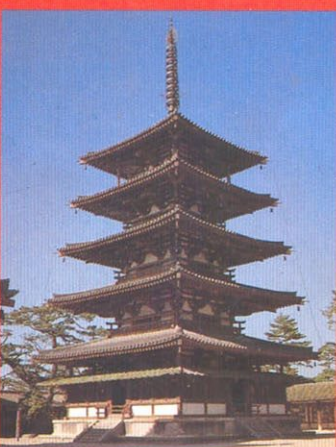
50012 YOMEI-MON



50013 KINKAKU-JI



50014 KONDOH



50015 GOJYU-NO-TOH



50016 YUMEDONO

1/12 BO CAR SERIES

14002	FERRARI BLACK F40 (DIE CAST)
14003	FERRARI F40 RED (DIE CAST)
14101	NISSAN SKYLINE GT-R '90
14107	Gr.A GT-R (KYOSEKI)
14108	Gr.A GT-R (JECS)
14109	Gr.A GT-R (CALSONIC)
14110	Gr.A GTR (TAISAN)
14111	NISSAN GT-R V-SPEC
14112	NISSAN GT-R NISMO
14113	GRA. BP SKYLINE GT-R '93

1/16 EM CAR SERIES

10105	KOENIG TESTAROSSA
10106	FERRARI 288 GTO
10108	TESTAROSSA SPIDER
*10109	KOENIG COUNTACH 5000
10110	FERRARI F40
*10111	PORSCHE 959 COMPETITION
*10112	COUNTACH 5000 '86 & '88
10113	COUNTACH 25TH ANV.
10116	FERRARI F40 LE MANS
*10118	NISSAN R380
10119	FERRARI BB512 (RED)
10120	FERRARI TESTAROSSA RED
10121	LAMBORGHINI MIURA
10122	ALFA ROMEO 133 COUPE
10123	JAGUAR PIRANA
10124	FERRARI F40 BLACKSTAR
10125	288 GTO YELLOW
*10126	KOENIG TESTAROSSA BLACK
10127	FERRARI TESTAROSSA BLACK
*10130	ITALIANO GT F40 '93
10133	ITALIANO GT F40 Colombo
*10134	ITALIANO GT F40 '94
*10135	JGTC TAISAN F40 '94

1/24 EM CAR SERIES

08102	FERRARI 365GTB 4 DAYTONA SPECIAL
*08105	FERRARI 288GTO (YELLOW BODY)
08001	PORSCHE 911 TURBO '85
08002	PORSCHE 930 TURBO '75
08003	PORSCHE 911 CARRERA '85
08004	PORSCHE 911 CARRERA CABRIOLET '85
08005	PORSCHE 911 CARRERA TARGA '85
08006	PORSCHE 911 CARRERA '73
08007	PORSCHE 911 COUPE S '68
08009	PORSCHE 911 COUPE R '67
08210	PORSCHE 911 CARRERA TS 3.0 74
08011	PORSCHE 911 FLAT NOSE
08012	BMW M635i CSI
08016	DINO 246GT LATTER TYPE
08018	DINO 246GT SPIDER
08019	COUNTACH 5000
08020	COUNTACH LP500S
08022	FERRARI 288 GTO
08023	365GTB 4 DAYTONA COUPE
08024	365GTB 4 SPIDER
08027	PORSCHE 368C 2000GS CA COUPE
08029	PORSCHE 368C 1600S R STER
08030	PORSCHE 368C 1900S CA COUPE
08031	PORSCHE 368C SPEEDSTER
08032	PORSCHE 368C CABRIOLET
08035	KOENIG COUNTACH 5000

1/24 HR CAR SERIES

12101	FORD GT-40 Mk II 1ST
12104	FERRARI 330 P-4
12105	FERRARI F40 LE MANS
12107	NISSAN KPCC-10 (RACER)
12108	TOYOTA SR800 (RACE TYPE)
12109	HONDA SR800 (RACE TYPE)
12110	DATSUN SR311 (RACE TYPE)
12112	NISSAN KPCC-10 (RACER)
12114	NISSAN RACER 4 DOOR
12117	HONDA SR600 JGP

1/24 RS CAR SERIES

*12022	KOENIG COUNTACH 5000
*12047	FERRARI 348TB
12049	PORSCHE CARRERA 2 EVOLUTION
12051	MERCEDES-BENZ 300E 2.5-16 EVOLUTION II
12053	500SL KOENIG SPECIAL
12054	LAMBORGHINI DIABLO 4WD
12055	PORSCHE 911 CARRERA TURBO '92
*12056	BMW M5
12058	KOENIG 500SL COUPE
*12059	FERRARI 348TB BLACK STAR
12061	PORSCHE 911 CARRERA 2
12062	NEW 512TR BLACKSTAR
12063	NEW512TR YELLOW
12064	BMW 600SL
12065	MERCEDES-BENZ 600SL OPEN
*12066	BMW SHARLOT
12067	BMW HARTGOLD HS
12401	FERRARI F40 (IMPROVED)
12402	KOENIG TESTAROSSA COMP
12403	KOENIG 928 S4
12404	KOENIG 911 TURBO
12405	PORSCHE 911 TURBO
12406	PORSCHE 911 SPEEDSTER '88
12407	PORSCHE 911 FLAT NOSE
12408	PORSCHE 911 CARRERA '88
12409	PORSCHE 911 TURBO CABRIOLET
*12410	PORSCHE 911 CARRERA CABRIOLET
12411	COUNTACH 25TH ANV.
12412	COUNTACH 5000
12414	MERCEDES-BENZ 500SL 90H TOP

*12415	PORSCHE 928 GT
12416	SKYLINE KPCC GT-R '60s
12417	PORSCHE 911 CARRERA 4
12418	MERCEDES-BENZ 190E 2.5-16 EVOLUTION
12419	DINO246GT
12420	DINO 246GTS SPIDER
12421	LAMBORGHINI DIABLO
12422	FERRARI 348TB
12423	KOENIG TESTAROSSA SPIDER
*12424	PORSCHE 911 CARRERA 4 CABRIOLET
12425	MERCEDES-BENZ 500SL (O.T.S.T.)
12426	NISSAN SKYLINE GT-R NISMO
*12427	PORSCHE 911 CARRERA 4 TARGA
12428	YELLOW DIABLO
*12437	PORSCHE 911 TURBO BLACKSTAR
*12438	KOENIG 500SL BLACK STAR
12439	MERCEDES-BENZ 300CE SL GRILL
12440	HONDA SR800
12441	TOYOTA SR800
12442	DATSUN SR311
12443	KOENIG SL OPEN BLACK
12444	FERRARI 512TR EUROPE
12445	FERRARI 512TR AMERICA
12446	KOENIG DIABLO
12450	PORSCHE 911 3.8RSR
12451	FERRARI 348TB CHALLENGE

1/24 LWS CAR SERIES

03252	NISMO K11 MICRA/MARCH
13501	ROVER MINI COOPER 1.3
12502	ROVER MINI MAYFAIR 1.3
12503	ROVER MINI 25TH ANNIVERSARY

12504	ROVER MINI CLUBMAN
12505	ROVER MINI RACE
12507	ROVER MINI MONTE-CARLO 30TH
12508	COLF GTI
12509	AUTOBIANCHI
12510	ROVER MINI VINTAGE
12511	MARCH TOMMY KAIRA M-13

1/24 A & D CAR SERIES

16001	MITSUBISHI PAJERO
16002	TOYOTA LAND CRUISER
16003	MITSUBISHI PAJERO (FULL OPTION)
16004	TOYOTA LAND CRUISER (FULL OPTION)
16005	MITSUBISHI PAJERO (SKI VERSION)
16006	TOYOTA LAND CRUISER (SKI VERSION)
16007	ISUZU BIG HORN/LOTUS
16008	ISUZU BIG HORN/IRMSHER
16010	ISUZU BIG HORN/SKI VERSION
*16021	MITSUBISHI MONTERO
*16022	TOYOTA LAND CRUISER EXPORT
16023	TOYOTA LAND CRUISER '92
16031	D.R.V MITSUBISHI PAJERO
16032	D.R.V PAJERO FULL OPTION
16033	D.R.V PAJERO, SKI VERSION
16034	D.R.V MITSUBISHI MONTERO
03259	SUZUKI WAGON R 4WD SURFING

1/24 IU CAR SERIES

03231	TOYOTA SOAFER 4.0GT LIMITED '90
03232	TOYOTA SOAFER 2.5GT TWIN TURBO '90
*03234	LEXUS COUPE '90
*03235	HONDA NEW PRELUDE SI EXP. '91
*03236	TOYOTA AE86 TRUENO '83
03237	TOYOTA AE86 LEVIN '83
*03238	HONDA CIVIC CR-X EXPORT '92
03239	NEW GOLF CL '92
*03240	NISSAN 300ZX CONVERTIBLE AMERICA '91
03241	NEW GOLF VR6 '93
03242	NEW GOLF GTI
03243	7TH SKYLINE 4 DOOR '85
03244	SUZUKI JIMNY SPL '93
03246	NISSAN SILVIA/GAZZEL H.T. '83
03247	NISSAN GT-R V-SPEC II '94
03251	NISSAN MICRA/MARCH '93
03253	NISSAN MICRA/MARCH '94
03254	NISSAN MICRA/MARCH EXPORT
03255	SUZUKI WAGON R RX '93
03256	SUZUKI WAGON R RG-4 '94
03257	SUZUKI WAGON R CARIFORNIA '94
03258	SUZUKI WAGON R SUNROOF '94
03301	TOYOTA CROWN 2800 '83
03303	NISSAN SKYLINE 2000GT-R PG6-10 '89
03304	TOYOTA CELSIOR '88
03305	NISSAN SKYLINE 2000GT-X '72
03306	NISSAN NEW CEDRIC 3.0 '83
03307	BMW M3 '82
03308	TOYOTA NEW CRESTA 2.5 '90
03310	NISSAN SKYLINE GT-R '89
03311	TOYOTA NEW SOAFER '88
03312	TOYOTA SOAFER 2800GT
03313	TOYOTA CHASER '88
03315	NISSAN CEDRIC '86
03316	TOYOTA NEW MARK II 2.5 '90
03317	NISSAN SILVIA '88
03318	TOYOTA CROWN 3.0 '88
03319	TOYOTA MR-2 S/C '87
*03320	NEW BMW 325i
*03321	LEXUS L5400 '88
03322	AMG BENZ 190E '92
03323	NISSAN 180/200/240SX '88
03324	TOYOTA CROWN S C '83
03325	TOYOTA SUPRA 3.0GT '87
03326	AUDI 90 2.3E '89
03327	HONDA CR-X GLASS TOP '89
03328	NISSAN 300ZX TURBO '89
03329	TOYOTA MARK II '87
03330	TOYOTA CRESTA '87
03331	TOYOTA CHASER '87
03333	NISSAN INFINITI Q45 '89
03334	BMW 535i '88
03334	MAZDA NEW SAVANNA RX-7 '85
03335	NISSAN 300ZR '86
03336	HONDA PRELUDE '87

*03337	NISSAN SKYLINE GTS '85 2dr
*03338	PORSCHE 928S-4
03339	NISSAN CEDRIC '87
03342	GOLF II GTI 16V '89
03343	NISSAN SKYLINE GTS-t '88
03344	NISSAN LAUREL '89
03346	BENZ 300CE-24 '88
03348	SUZUKI SAMURAI '88
03349	HONDA CR-X '87
03353	HONDA NEW PRELUDE VTEC
*03354	HONDA NEW PRELUDE SI '91
03355	HONDA CR-X VTEC '91
03356	HONDA NEW CR-X VXR '92
03357	NEW GOLF GL '92
03358	NISSAN 300ZX CONVERTIBLE JAPAN '92
03361	TOYOTA MARK II '93 TOURER V
03363	TOYOTA MARK II '93 GRANDE G2.5
03364	TOYOTA CRESTA '93 SUPER LUCENT 2.5
03365	TOYOTA CRESTA '93 TOURER
03366	TOYOTA MARK II '93 GRANDE G3.0
03367	TOYOTA CRESTA '93 SUPER LUCENT 3.0
03370	TOYOTA NEW MR-2 '93
03371	SUZUKI ESCUDO/VITARA

1/24 JT CAR SERIES

18201	TOYOTA SOAFER
18202	HONDA NEW PRELUDE 2.0S
18203	NISSAN SKYLINE GT-R
18204	NISSAN 300ZX
18206	HONDA CR-X DELSO
18207	TOYOTA SUPRA TURBO A
18208	NISSAN SKYLINE GTS-t
18208	MERCEDES-BENZ 300CE
18209	MEZDA SAVANNA RX-7 (FC35)
18210	TOYOTA MARK II 2.5GT
18211	NISSAN SILVIA K's
18212	TOYOTA CRESTA 2.5GT
18213	TOYOTA NEW MR-2 '93
18214	NISSAN GT-R V-SPEC II
18215	TOYOTA CELSIOR
18216	NISSAN 180/240 SX
18217	TOYOTA MARK II '93 GRANDE G2.5
18219	TOYOTA NEW CRESTA G4
18220	TOYOTA NEW MARK II G4
18221	TOYOTA NEW SOAFER 4.0
18222	NISSAN 300ZX CONVERTIBLE
18223	NISSAN LAUREL '89
18224	SOAFER 2.5GT TWIN TURBO
18225	CRESTA '93 SUPER LUCENT 2.5

1/24 K CAR SERIES

02011	DAIHATSU LEEZA
02012	SUZUKI ALTO WORKS
02013	DAIHATSU MIRA TURBO
02014	SUZUKI ALTO TWIN CAM
02017	DAIHATSU MIRA AERO
02018	DAIHATSU LEEZA AERO
02019	SUZUKI ALTO AERO

20202	TOHGE SUZUKI ALTO TWIN CAM
-------	----------------------------

1/48 CORE CAR SERIES

00001	NISSAN FAIRLADY 300ZR
00002	TOYOTA MR-2
00003	HONDA PRELUDE XX
00004	TOYOTA SOAFER 3.0
00009	TOYOTA TE27 LEVIN
00010	DATSUN 240ZG

1/12-1/15 BIKE CAR SERIES

*15101	HONDA VT250F SINGLE (11:12)
*15102	HONDA VT250F TANDEM (11:12)
*15103	HONDA GL1800 GOLD WING (11:15)
*15104	HONDA GL1100 INTERSTATE (11:15)

1/24 TOHGE CAR SERIES

04001	TOHGE LEVIN
04002	TOHGE CR-X
04003	TOHGE TRUENO
04004	TOHGE MR-2 '87
04005	TOHGE SUPRA TURBO A
*04006	TOHGE SKYLINE GTS-R
04007	TOHGE NISSAN 300ZR '87
04008	TOHGE SKYLINE GTR '89S
04009	TOHGE SKYLINE RX-7
*04010	TOHGE NISSAN 180SX
04011	TOHGE NISSAN 300ZX '90
04012	TOHGE NISSAN 280Z
04013	TOHGE SKYLINE GT-R '90
04014	TOHGE SILVIA '89
04016	TOHGE SKYLINE 2000GT-X
04017	TOHGE SOAFER 2800GT
04018	TOHGE STARION
04019	TOHGE SKYLINE GTS-t
04020	TOHGE SKYLINE GTS-R
04024	TOHGE NEW MR-2 '93
04025	TOHGE TOYOTA CHASER
04026	TOHGE TOYOTA CELICA XX
04221	TOHGE PRELUDE 2.0SI

1/24 TOURING CAR SERIES

06114	AXIA GT-R
06115	TAISAN GT-R '91
06123	CARRERA CUP JAPAN A
06124	CARRERA CUP JAPAN B
06125	CARRERA CUP JAPAN SPL
06126	TAISAN GT-R '92
06127	BMW M3 '93 (SOGOKEIBI)
06128	Gr.A GT-R '93 (CALSONIC)
06129	BMW M3 '93 (AUTOTECH)
06130	Gr.A GT-R '93 (KYOSEKI)
06133	Gr.A GT-R '93 (FET)
06135	190EVO II G.P.A. (BERLIN2000)
06137	CARRERA CUP JAPAN A '93
06139	BP NISSAN GT-R '93
*06140	JGTC PORSCHE RSR 3.8
06141	JGTC F40 TAISAN
06142	MERCEDES-BENZ C126 '94 '02'
06145	KOENIG KLEIN CARRERA 2
06146	MERCEDES-BENZ DTM 94 'PROMARKT'
06147	JGTC COUNTACH
06148	MERCEDES-BENZ DTM 94 'PROMARKT'

1/24 SCG CAR SERIES

*06201	FERRARI F40
06202	FERRARI 348TB
06203	PORSCHE TURBO
*06205	FERRARI F40 COLOMBO
06206	PORSCHE 911 3.8 RSR
06207	FERRARI F40 TOTIP

1/24 G&T CAR SERIES

11003	MECHANIC FIGURES
11004	DRIVERS FIGURES
11031	CAR ACCESSORY (GARAGE)
11032	CAR ACCESSORY (TOOLS)
11101	GRADE UP PARTS ASSORTMENT NO.1
11102	GRADE UP PARTS ASSORTMENT NO.2

1/24 T&W CAR SERIES

19013	INCH TYPE & WIRE, WH
19014	WIDE TYRE & WIRE, WH
19015	GOLD WHEEL SET (FOR ID)
19016	GOLD WHEEL SET (FOR KW)
19117	SI TYRE & WHEEL (OZ.LA)
19118	SI TYRE & WHEEL (OZ.PO)
19119	SI TYRE & WHEEL (OZ)
19120	SI TYRE & WHEEL (RS)
19121	345 TYRE & WHEEL (OZ.LA)
19122	345 TYRE & WHEEL (OZ.PO)
19123	345 TYRE & WHEEL (OZ)
19124	345 TYRE & WHEEL (RS)
19131	18-INCH TYRE & WHEEL (BBS)
19132	18-INCH TYRE & WHEEL (ZEIT)
19133	18-INCH TYRE & WHEEL (ZEIT)
19134	18-INCH TYRE & WHEEL (BRS)
19135	18-INCH TYRE & WHEEL (AMG)
19136	18-INCH TYRE & WHEEL (RUF)
19140	NOSTALGIC TYRE & WHEEL (LINEA SPORT)
19141	NOSTALGIC TYRE & WHEEL (BBS RS)
19142	NOSTALGIC TYRE & WHEEL (WATANABE)
19143	NOSTALGIC TYRE & WHEEL (IMPUL MESH)
19144	NOSTALGIC TYRE & WHEEL (SUPER VOLK)
19145	NOSTALGIC TYRE & WHEEL (AMG)
19146	NOSTALGIC TYRE & WHEEL (IMPUL)
19147	NOSTALGIC TYRE & WHEEL (BBS)
19148	NOSTALGIC TYRE & WHEEL (VOL.4 MESH)
19149	NOSTALGIC TYRE & WHEEL (LINEA SPORT)

Вернуться к оглавлению



FUJIMI

FUJIMI Corporation

4-21-1 Toro, Shizuoka city, 422, JAPAN
TEL.054-286-0346 FAX.054-286-0349

